



ECO-FRIDGE UK LTD

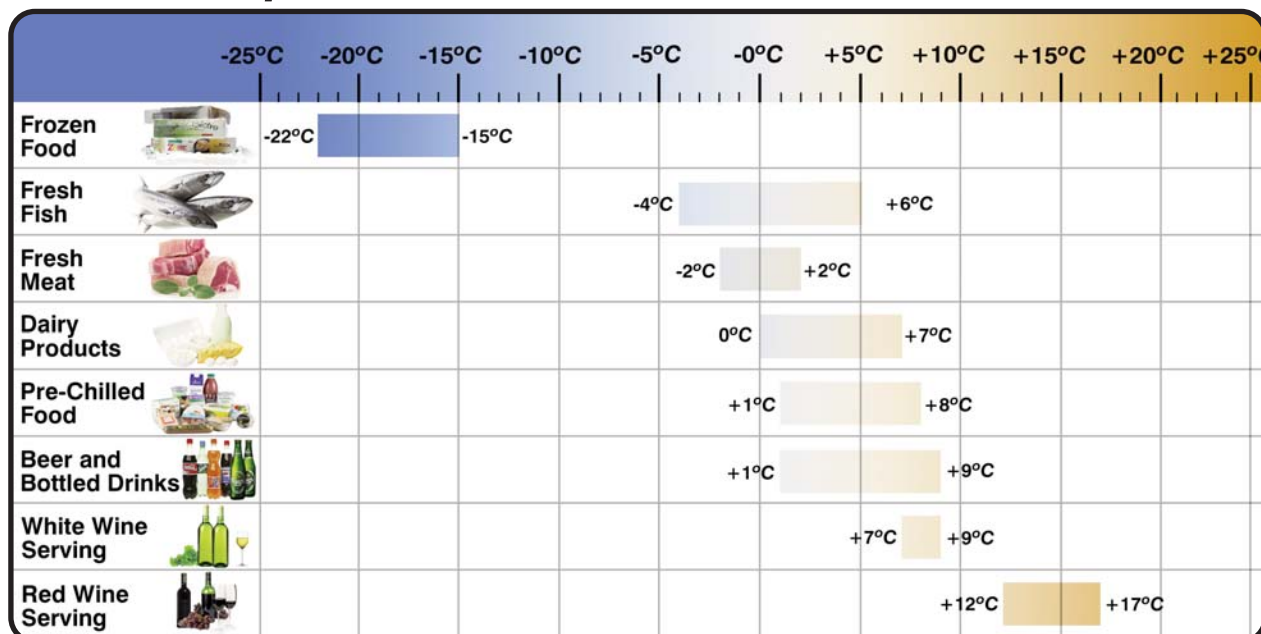
**Display and Catering Refrigeration
Equipment (Tel: 01869 249965)**



Index

Information	Page	2
R290	Benefits	3
Premium	Multidecks	4-20
Patisserie	Display	21-29
Serve Over	Display	30-32
Glass Door	Display	33-48
Wine/Cigar	Display	49-51
Storage	Cabinets	52-60
Catering	Cabinets	61-63
Terms & Conditions	Page	64
Notes	Page	65-66

Food Temperature Guide



Overview Climate Classes

Climate Classes	max. Conditions	
Climate Class 3	25°C	60% RH
Climate Class 4	30°C	55% RH
Climate Class 5	40°C	40% RH
Climate Class 6	27°C	70% RH
Climate Class 7	35°C	70% RH
Extended Temperate Class	SN	10°C to 32°C
Temperate Class	N	16°C to 32°C
Sub Tropical Class	ST	18°C to 38°C
Tropical Class	T	18°C to 43°C

Overview Temperature Classes

Class	The highest temperature of the warmest M-Package equal or lower than °C	The lowest temperature of the coldest M-Package equal or lower than °C	The lowest temperature of the warmest M-Package equal or lower than °C
L1	-15	-	-18
L3	-12	-	-15
M0*	+4	-1	-
M1	+5	-1	-
M2	+7	-1	-
H1	+10	+1	-
H2	+10	-1	-

Terms and Conditions of Sale

Electrical Supply

- All refrigerated cabinets must be PAT tested by the customer (Portable Appliance Test) to the legal requirement. This is to ensure that all electrical connections and components have not been damaged in transit.
- All products should be used in conjunction with an RCD (Residual Current Device).

Specifications and Appearance

- Whilst every effort has been made to show up to date pictures and descriptions there may still be errors, we reserve the right to change the specifications, and appearance of any model without notice.

Technical Information

- Every effort has been made to ensure the technical information provided in this catalogue is correct. We however reserve the right to change the technical information without notice, and cannot be held responsible for any errors or omissions in this data.



Invest In The Future

Convert to a Hydrocarbon ECO-Fridge

Frost-Tech R290 & R600 Hydrocarbon Refrigerators are powered by cigarette lighter gas which does not deplete the ozone layer. Developed to address the increasing demand for lower energy consumption levels, corporate social responsibility towards sustainability, and the current noise levels of commercial refrigeration equipment, this approach has resulted in a dramatic reduction in direct and indirect CO2 emissions into the atmosphere. As part of its green technology initiative, Frost-Tech (a manufacturer of commercial refrigeration equipment) has made a global move towards the use of Hydrocarbon Refrigerants.

As such, the company is clearly focused on developing refrigerators and freezers through the utilisation of the Hydrocarbon family of refrigerants - propane R290 and isobutane R600. In order to reduce harmful green house gas emissions, Frost-Tech is committed to the use of Hydrocarbon refrigerants, the Frost-Tech green technology initiative is dedicated to the development, manufacturing and marketing of energy efficient refrigerators and freezers. Frost-Tech's varied experience and expertise in the development and manufacturing of Hydrocarbon refrigerators and freezers has lead to an extensive product portfolio which already boasts over 100 variations of refrigerator and freezer products within its eco-friendly range.

Hydrocarbon refrigerants are reported to be in the range of 20-30% more efficient than HFC refrigerants, and are more energy-efficient than their conventional HFC or CFC counterparts that are still widely used in commercial refrigeration today. A Hydrocarbon R290 system can consume approximately 27% less energy compared to an equivalent HFC R404 refrigeration system. Field tests on large Hydrocarbon display chillers have shown that when energy efficiency measures are combined, companies can enjoy in excess of 50% savings in energy consumption levels on display chillers that operate year round, when compared to the running costs of display chillers that do not have the benefit of the Frost-Tech energy efficiency design features.

Premium Multideck Display Cabinets

ECO-FRIDGE UK 

Frost Tech Energy Saving R290 Hydrocarbon Refrigerant Slimline Stainless Steel Multideck

Save extra on energy with are R290 hydrocarbon refrigerant open fronted display units with four adjustable shelves and side illumination. Ideal for high volume retail environments. (Maximum operating temperature upto 25°C/60%R/H) (This cabinet is Factory Order)



SD60/180DG-HC Chiller Stainless Steel

Features

- Full length top & side mounted Energy Saving LED light
- Digital temperature control display
- Double glazed glass end panels for visibility and Energy saving
- 4 tier adjustable shelving plus base
- Integral night blind, for nighttime saving
- Clear acrylic shelf edge risers
- 304 Stainless Steel high grade finish
- Auto Electrical or Hot gas defrost
- 4 Adjustable feet
- Low front to maximise display space
- Hydrocarbon R290 refrigerant low energy consumption
- Low energy compressors
- High performance long life fan motor
- Slide out condensing system,
- Stainless steel drip tray
- Self evaporating drainage system
- CFC-Free insulation

Technical Specifications

CODE	REFRIGERANT	DIMENSIONS mm WxDxH	TEMP RANGE	SHELVES	CONTAINER 40FT	WEIGHT KG
SD60/60DG-HC	R290	600x600x1950	-1 / +7°C	4	57	171kg
SD60/100DG-HC	R290	1000x600x1950	-1 / +7°C	4	38	225kg
SD60/120DG-HC	R290	1200x600x1950	-1 / +7°C	4	28	265kg
SD60/150DG-HC (2x 13-amp supplies)	R290	1500x600x1950	-1 / +7°C	4	26	300kg
SD60/180DG-HC (2x 13-amp supplies)	R290	1800x600x1950	-1 / +7°C	4	19	364kg
SD60/240DG-HC (2x 13-amp supplies)	R290	2400x600x1950	-1 / +7°C	4	12	N/A

2x 13A plugs which must be inserted into separate 13A sockets connected to a minimum 32A mains supply. The socket employed must be properly earthed, firmly installed and protected by 32-amp circuit breaker type C.

ECO Multidecks

Frost-Tech Double Glazed Slimline Stainless Steel Multideck Full Energy Saving LED Light Strips

Open fronted display units with four adjustable shelves and side illumination. Ideal for high volume retail environments. (Maximum operating temperature upto 25°C/60%R/H)



SD60/120DG

Chiller

Stainless Steel

Features

- Full length top & side mounted Energy Saving LED light
- Digital temperature control display
- Double glazed glass end panels for visibility and Energy saving
- 4 tier adjustable shelving plus base
- Integral night blind, for nighttime saving
- Clear acrylic shelf edge risers
- 304 Stainless Steel high grade finish
- Auto Electrical or Hot gas defrost
- 4 Adjustable feet
- Low front to maximise display space
- Low energy compressors
- High performance long life fan motor
- Slide out condensing system, stainless steel drip tray
- Self evaporating drainage system
- CFC-Free insulation

Technical Specifications

CODE	DIMENSIONS mm WxDxH	TEMP RANGE	SHELVES	CONTAINER 40FT	WEIGHT KG
SD60/60DG	600x600x1950	-1 / +7°C	4	57	171kg
SD60/100DG	1000x600x1950	-1 / +7°C	4	38	225kg
SD60/120DG	1200x600x1950	-1 / +7°C	4	28	265kg
SD60/150DG (2x 13-amp supplies)	1500x600x1950	-1 / +7°C	4	26	300kg
SD60/180DG (2x 13-amp supplies)	1800x600x1950	-1 / +7°C	4	19	364kg
SD60/240DG (2x 13-amp supplies)	2400x600x1950	-1 / +7°C	4	12	480kg

2x 13A plugs which must be inserted into separate 13A sockets connected to a minimum 32A mains supply. The socket employed must be properly earthed, firmly installed and protected by 32-amp circuit breaker type C.



Save extra energy on our shutter system!

Frost Tech Heavy Duty Lockable Stainless Steel Shutter Multideck

Open fronted stainless steel multideck display with heavy duty lockable shutter and four adjustable shelves, ideal for high volume retail environments. (Maximum operating temperature upto 25°C/60%R/H)



SD75/130SH Chiller Stainless Steel

Features

- Full length top mounted lights
- Digital temperature control display
- 4 tier adjustable shelving plus base
- Integral lockable shutter, for nighttime energy saving
- Clear acrylic shelf edge risers
- Auto Electrical or Hot gas defrost
- 4 Adjustable feet
- Low front to maximise display space
- CFC-Free insulation
- Low energy compressors
- High performance long life fan motor
- Slide out condensing system, stainless steel drip tray
- Self evaporating drainage system

ECO Multidecks

Technical Specifications

CODE	DIMENSIONS mm WxDxH	TEMP RANGE	SHELVES	CONTAINER 40FT	WEIGHT KG
SD75/100SH	1000x750x1950	-1 / +7°C	4	30	251kg
SD75/130SH	1300x750x1950	-1 / +7°C	4	23	291kg
SD75/190SH (2x 13-amp supplies)	1900x750x1950	-1 / +7°C	4	15	410kg
SD75/250SH (2x 13-amp supplies)	2500x750x1950	-1 / +7°C	4	12	530kg

2x 13A plugs which must be inserted into separate 13A sockets connected to a minimum 32A mains supply. The socket employed must be properly earthed, firmly installed and protected by 32-amp circuit breaker type C.



Save extra energy on our shutter system!

Frost Tech Heavy Duty Lockable White Shutter Multideck

Open fronted multideck display with heavy duty lockable shutter and four adjustable shelves, ideal for high volume retail environments. (Maximum operating temperature upto 25°C/60%R/H)



WD75/190SH

Chiller

White Steel

Features

- Full length top mounted lights
- Digital temperature control display
- 4 tier adjustable shelving plus base
- Integral lockable shutter, for nighttime energy saving
- Clear acrylic shelf edge risers
- Auto Electrical or Hot gas defrost
- 4 Adjustable feet
- Low front to maximise display space
- CFC-Free insulation
- Low energy compressors
- High performance long life fan motor
- Slide out condensing system, stainless steel drip tray
- Self evaporating drainage system

Technical Specifications

CODE	DIMENSIONS mm WxDxH	TEMP RANGE	SHELVES	CONTAINER 40FT	WEIGHT KG
WD75/100SH	1000x600x1950	-1 / +7°C	4	38	236kg
WD75/130SH	1300x750x1950	-1 / +7°C	4	28	291kg
WD75/190SH (2x 13-amp supplies)	1900x750x1950	-1 / +7°C	4	26	403kg
WD75/250SH (2x 13-amp supplies)	2500x750x1950	-1 / +7°C	4	19	530kg

2x 13A plugs which must be inserted into separate 13A sockets connected to a minimum 32A mains supply. The socket employed must be properly earthed, firmly installed and protected by 32-amp circuit breaker type C.

Frost Tech White - Full Glass Slimline Multideck

Slimline open fronted display units with four adjustable shelves, featuring a top mounted light and full glazed panoramic end walls fitted as standard. (Maximum operating temperature upto 25°C/60%R/H)



WD60/120 Chiller White Steel

Features

- Full length top mounted light
- Digital temperature control display
- Full Glass end panels for visibility
- 4 tier adjustable shelving plus base
- Integral night blind, for nighttime saving
- Clear acrylic shelf edge risers
- Auto Electrical or Hot gas defrost
- 4 Adjustable feet
- Low front to maximise display space
- Low energy compressors
- High performance long life fan motor
- Slide out condensing system,
- Stainless steel drip tray
- Self evaporating drainage system
- CFC-Free insulation

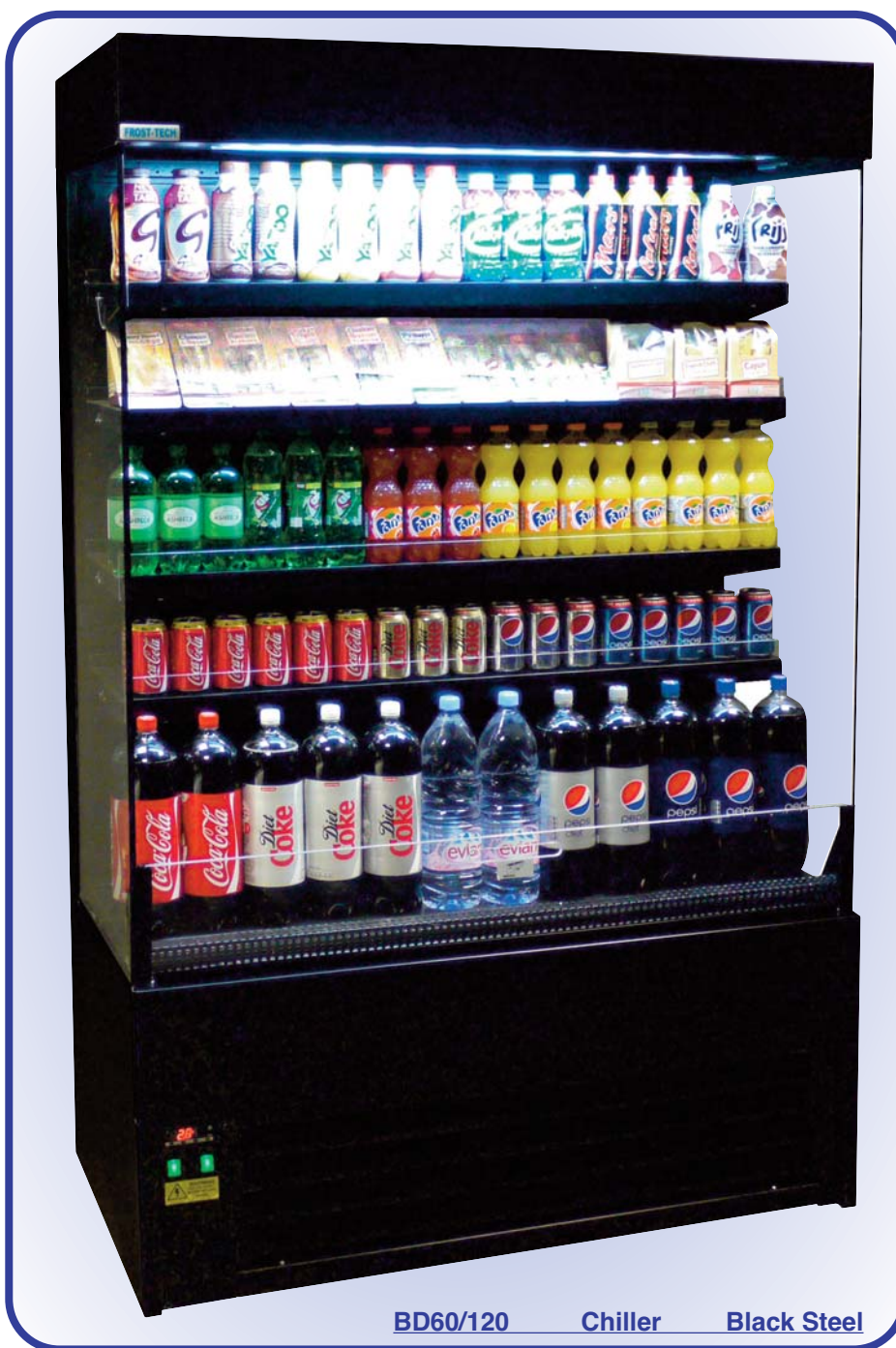
Technical Specifications

CODE	DIMENSIONS mm WxDxH	TEMP RANGE	SHELVES	CONTAINER 40FT	WEIGHT KG
WD60/60	600x600x1950	-1 / +7°C	4	57	163kg
WD60/100	1000x600x1950	-1 / +7°C	4	38	209kg
WD60/120	1200x600x1950	-1 / +7°C	4	28	255kg
WD60/150 (2x 13-amp supplies)	1500x600x1950	-1 / +7°C	4	26	282kg
WD60/180 (2x 13-amp supplies)	1800x600x1950	-1 / +7°C	4	19	350kg
WD60/240 (2x 13-amp supplies)	2400x600x1950	-1 / +7°C	4	12	490kg

2x 13A plugs which must be inserted into separate 13A sockets connected to a minimum 32A mains supply. The socket employed must be properly earthed, firmly installed and protected by 32-amp circuit breaker type C.

Frost Tech Black - Full Glass Slimline Multideck

Open fronted display chillers, ideal for merchandising snack foods, drinks and dairy products with a stylish black look. (Maximum operating temperature upto 25°C/60%R/H)



BD60/120 Chiller Black Steel

Features

- Full length top mounted light
- Digital temperature control display
- Full Glass end panels for visibility
- 4 tier adjustable shelving plus base
- Integral night blind, for nighttime saving
- Clear acrylic shelf edge risers
- Auto Electrical or Hot gas defrost
- 4 Adjustable feet
- Low front to maximise display space
- Low energy compressors
- High performance long life fan motor
- Slide out condensing system,
- Stainless steel drip tray
- Self evaporating drainage system
- CFC-Free insulation

Technical Specifications

CODE	DIMENSIONS mm WxDxH	TEMP RANGE	SHELVES	CONTAINER 40FT	WEIGHT KG
BD60/60	600x600x1950	-1 / +7°C	4	57	163kg
BD60/100	1000x600x1950	-1 / +7°C	4	38	209kg
BD60/120	1200x600x1950	-1 / +7°C	4	28	255kg
BD60/150 (2x 13-amp supplies)	1500x600x1950	-1 / +7°C	4	26	282kg
BD60/180 (2x 13-amp supplies)	1800x600x1950	-1 / +7°C	4	19	350kg
BD60/240 (2x 13-amp supplies)	2400x600x1950	-1 / +7°C	4	12	490kg

2x 13A plugs which must be inserted into separate 13A sockets connected to a minimum 32A mains supply. The socket employed must be properly earthed, firmly installed and protected by 32-amp circuit breaker type C.

Frost Tech Stainless Steel - Full Glass Slimline Multideck

Slimline high capacity open fronted display units with four adjustable shelves. Featuring a topmounted light and full glazed panoramic end walls fitted as standard. Polished stainless steel finish. (Maximum operating temperature upto 25°C/60%R/H)



SD60/120 Chiller Stainless Steel

Features

- Full length top mounted light
- Digital temperature control display
- Full Glass end panels for visibility
- 4 tier adjustable shelving plus base
- Integral night blind, for nighttime saving
- Clear acrylic shelf edge risers
- Auto Electrical or Hot gas defrost
- 304 Stainless Steel high grade finish
- Low front to maximise display space
- Low energy compressors
- High performance long life fan motor
- Slide out condensing system,
- Stainless steel drip tray
- Self evaporating drainage system
- CFC-Free insulation
- 4 Adjustable feet

Technical Specifications

CODE	DIMENSIONS mm WxDxH	TEMP RANGE	SHELVES	CONTAINER 40FT	WEIGHT KG
SD60/60	600x600x1950	-1 / +7°C	4	57	163kg
SD60/100	1000x600x1950	-1 / +7°C	4	38	218kg
SD60/120	1200x600x1950	-1 / +7°C	4	28	247kg
SD60/150 (2x 13-amp supplies)	1500x600x1950	-1 / +7°C	4	26	291kg
SD60/180 (2x 13-amp supplies)	1800x600x1950	-1 / +7°C	4	19	350kg
SD60/240 (2x 13-amp supplies)	2400x600x1950	-1 / +7°C	4	12	490kg

2x 13A plugs which must be inserted into separate 13A sockets connected to a minimum 32A mains supply. The socket employed must be properly earthed, firmly installed and protected by 32-amp circuit breaker type C.

Frost Tech White - Full Glass Multideck

Open fronted display units with extra depth, four adjustable shelves. Featuring a top mounted light and full glazed panoramic end walls fitted as standard. (Maximum operating temperature upto 25°C/60%R/H)



Features

- Full length top mounted light
- Digital temperature control display
- Full Glass end panels for visibility
- 4 tier adjustable shelving plus base
- Integral night blind, for nighttime saving
- Clear acrylic shelf edge risers
- Auto Electrical or Hot gas defrost
- 4 Adjustable feet
- Low front to maximise display space
- Low energy compressors
- High performance long life fan motor
- Slide out condensing system,
- Stainless steel drip tray
- Self evaporating drainage system
- CFC-Free insulation

Technical Specifications

CODE	DIMENSIONS mm WxDxH	TEMP RANGE	SHELVES	CONTAINER 40FT	WEIGHT KG
WD75/100	1000x750x1950	-1 / +7°C	4	30	220kg
WD75/120	1200x750x1950	-1 / +7°C	4	24	260kg
WD75/150 (2x 13-amp supplies)	1500x750x1950	-1 / +7°C	4	22	290kg
WD75/180 (2x 13-amp supplies)	1800x750x1950	-1 / +7°C	4	15	355kg
WD75/240 (2x 13-amp supplies)	2400x750x1950	-1 / +7°C	4	12	500kg

2x 13A plugs which must be inserted into separate 13A sockets connected to a minimum 32A mains supply. The socket employed must be properly earthed, firmly installed and protected by 32-amp circuit breaker type C.

Frost Tech Stainless Steel - Full Glass Multideck

Open fronted stainless steel display units with extra depth, four adjustable shelves. Featuring a top mounted light and full glazed panoramic end walls fitted as standard. (Maximum operating temperature upto 25°C/60%R/H)



Features

- Full length top mounted light
- Digital temperature control display
- Full glazed glass end panels for visibility
- 4 tier adjustable shelving plus base
- Integral night blind, for nighttime saving
- Clear acrylic shelf edge risers
- 304 Stainless Steel high grade finish
- Auto Electrical or Hot gas defrost
- 4 Adjustable feet
- Low front to maximise display space
- Low energy compressors
- High performance long life fan motor
- Slide out condensing system,
- Stainless steel drip tray
- Self evaporating drainage system
- CFC-Free insulation

Multideck Cabinets

Technical Specifications

CODE	DIMENSIONS mm WxDxH	TEMP RANGE	SHELVES	CONTAINER 40FT	WEIGHT KG
SD75/100	1000x750x1950	-1 / +7°C	4	30	262kg
SD75/120	1200x750x1950	-1 / +7°C	4	24	283kg
SD75/150 (2x 13-amp supplies)	1500x750x1950	-1 / +7°C	4	22	328kg
SD75/180 (2x 13-amp supplies)	1800x750x1950	-1 / +7°C	4	15	385kg
SD75/240 (2x 13-amp supplies)	2400x750x1950	-1 / +7°C	4	12	500kg

2x 13A plugs which must be inserted into separate 13A sockets connected to a minimum 32A mains supply. The socket employed must be properly earthed, firmly installed and protected by 32-amp circuit breaker type C.

Frost Tech White Curved Multideck

Open fronted display chillers, ideal for merchandising snack foods ,drinks and dairy products with a sleek stylish curved design giving you a great view of products. (Maximum operating temperature upto 25°C/60%R/H)



Features

- Full length top mounted light
- Digital temperature control display
- Glass end panels for visibility
- 4 tier adjustable shelving plus base
- Integral night blind, for nighttime saving
- Clear acrylic shelf edge risers
- Auto Electrical or Hot gas defrost
- 4 Adjustable feet
- Low front to maximise display space
- Low energy compressors
- High performance long life fan motor
- Slide out condensing system,
- Stainless steel drip tray
- Self evaporating drainage system
- CFC-Free insulation

Technical Specifications

CODE	DIMENSIONS mm WxDxH	TEMP RANGE	SHELVES	CONTAINER 40FT	WEIGHT KG
WRD80/68	680x800x1950	-1 / +7°C	4	42	180kg
WRD80/100	1000x800x1950	-1 / +7°C	4	28	212kg
WRD80/130	1300x800x1950	-1 / +7°C	4	23	250kg
WRD80/190 (2x 13-amp supplies)	1900x800x1950	-1 / +7°C	4	14	363kg

2x 13A plugs which must be inserted into separate 13A sockets connected to a minimum 32A mains supply. The socket employed must be properly earthed, firmly installed and protected by 32-amp circuit breaker type C.

Frost Tech Black Curved Multideck

Open fronted display chillers, ideal for merchandising snack foods, drinks and dairy products with a sleek stylish curved design giving you a great view of products. (Maximum operating temperature upto 25°C/60%R/H)



BRD80/130

Chiller

Black Steel

Features

- Full length top mounted light
- Digital temperature control display
- Glass end panels for visibility
- 4 tier adjustable shelving plus base
- Integral night blind, for nighttime saving
- Clear acrylic shelf edge risers
- Auto Electrical or Hot gas defrost
- 4 Adjustable feet
- Low front to maximise display space
- Low energy compressors
- High performance long life fan motor
- Slide out condensing system,
- Stainless steel drip tray
- Self evaporating drainage system
- CFC-Free insulation

Technical Specifications

CODE	DIMENSIONS mm WxDxH	TEMP RANGE	SHELVES	CONTAINER 40FT	WEIGHT KG
BRD80/68	680x800x1950	-1 / +7°C	4	42	180kg
BRD80/100	1000x800x1950	-1 / +7°C	4	28	212kg
BRD80/130	1300x800x1950	-1 / +7°C	4	23	250kg
BRD80/190 (2x 13-amp supplies)	1900x800x1950	-1 / +7°C	4	14	363kg

2x 13A plugs which must be inserted into separate 13A sockets connected to a minimum 32A mains supply. The socket employed must be properly earthed, firmly installed and protected by 32-amp circuit breaker type C.

Frost Tech Stainless Steel Hi-Capacity Multideck

High capacity open fronted Stainless Steel display units with four adjustable heavy duty shelves. Ideal for high volume retail environments. (Maximum operating temperature upto 25°C/60%R/H)



SD85/190 Chiller Stainless Steel

Features

- Full length top mounted light
- Digital temperature control display
- 4 tier adjustable shelving plus base
- Integral night blind, for nighttime saving
- Clear acrylic shelf edge risers
- 304 Stainless Steel high grade finish
- Auto Electrical or Hot gas defrost
- 4 Adjustable feet
- Low front to maximise display space
- Low energy compressors
- High performance long life fan motor
- Slide out condensing system
- Stainless steel drip tray
- Self evaporating drainage system
- CFC-Free insulation

Technical Specifications

CODE	DIMENSIONS mm WxDxH	TEMP RANGE	SHELVES	CONTAINER 40FT	WEIGHT KG
SD85/100	1000x850x1950	-1 / +7°C	4	26	251kg
SD85/130	1300x850x1950	-1 / +7°C	4	21	313kg
SD85/190 (2x 13-amp supplies)	1900x850x1950	-1 / +7°C	4	13	440kg
SD85/250 (2x 13-amp supplies)	2500x850x1950	-1 / +7°C	4	8	550kg

2x 13A plugs which must be inserted into separate 13A sockets connected to a minimum 32A mains supply. The socket employed must be properly earthed, firmly installed and protected by 32-amp circuit breaker type C.

Frost Tech White Hi-Capacity Multideck

High capacity open fronted white display units with four adjustable heavy duty shelves. Ideal for high volume retail environments. (Maximum operating temperature upto 25°C/60%R/H)



WD85/190 Chiller White Steel

Features

- Full length top mounted light
- Digital temperature control display
- 4 tier adjustable shelving plus base
- Integral night blind, for nighttime saving
- Clear acrylic shelf edge risers
- 304 Stainless Steel high grade finish
- Auto Electrical or Hot gas defrost
- 4 Adjustable feet
- Low front to maximise display space
- Low energy compressors
- High performance long life fan motor
- Slide out condensing system,
- Stainless steel drip tray
- Self evaporating drainage system
- CFC-Free insulation

Technical Specifications

CODE	DIMENSIONS mm WxDxH	TEMP RANGE	SHELVES	CONTAINER 40FT	WEIGHT KG
WD85/100	1000x850x1950	-1 / +7°C	4	26	246kg
WD85/130	1300x850x1950	-1 / +7°C	4	21	305kg
WD85/190 (2x 13-amp supplies)	1900x850x1950	-1 / +7°C	4	13	427kg
WD85/250 (2x 13-amp supplies)	2500x850x1950	-1 / +7°C	4	8	550kg

2x 13A plugs which must be inserted into separate 13A sockets connected to a minimum 32A mains supply. The socket employed must be properly earthed, firmly installed and protected by 32-amp circuit breaker type C.

Multideck Cabinets

Frost Tech Low Front Hi-Capacity Stainless Steel Multideck

High capacity low open fronted Stainless Steel display units with five adjustable shelves. Ideal for high volume retail environments. (Maximum operating temperature upto 25°C/60%R/H)

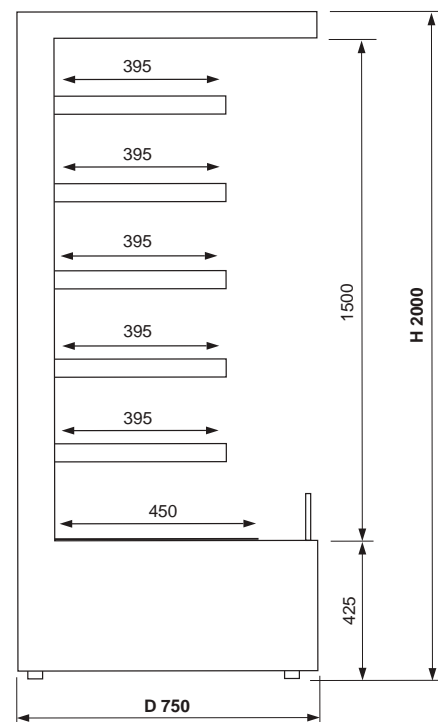


SLFD75/100 Chiller Stainless Steel

Features

- Full length top & side mounted light
- Digital temperature control display
- Double glazed glass end panels for visibility
- 4 tier adjustable shelving plus base
- Integral night blind, for nighttime saving
- Clear acrylic shelf edge risers
- 304 Stainless Steel high grade finish
- Auto Electrical or Hot gas defrost
- 4 Adjustable feet
- Ultra Low front to maximise display space
- Low energy compressors
- High performance long life fan motor
- Slide out condensing system, stainless steel drip tray
- Self evaporating drainage system
- CFC-Free insulation

SLFD / RANGE



Technical Specifications

CODE	DIMENSIONS mm WxDxH	TEMP RANGE	SHELVES	CONTAINER 40FT	WEIGHT KG
SLFD75/100	1000x750x1950	-1 / +7°C	5	26	251kg
SLFD75/130	1300x750x1950	-1 / +7°C	5	22	313kg
SLFD75/180 (2x 13-amp supplies)	1800x750x1950	-1 / +7°C	5	13	420kg

2x 13A plugs which must be inserted into separate 13A sockets connected to a minimum 32A mains supply. The socket employed must be properly earthed, firmly installed and protected by 32-amp circuit breaker type C.

Frost Tech Low Front Hi-Capacity White Multideck

High capacity low open fronted white display units with five adjustable shelves. Ideal for high volume retail environments. (Maximum operating temperature upto 25°C/60%R/H)

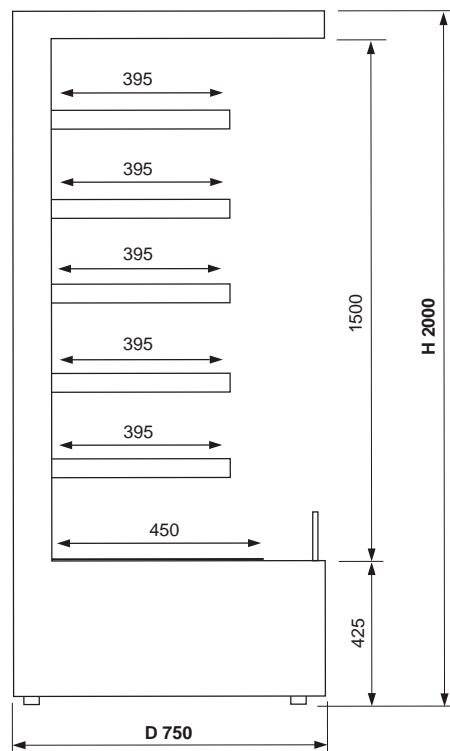


WLFD75/100 Chiller White Steel

Features

- Full length top & side mounted light
- Digital temperature control display
- Double glazed glass end panels for visibility and Energy saving
- 4 tier adjustable shelving plus base
- Integral night blind, for nighttime saving
- Clear acrylic shelf edge risers
- Auto Electrical or Hot gas defrost
- 4 Adjustable feet
- Ultra Low front to maximise display space
- Low energy compressors
- High performance long life fan motor
- Slide out condensing system, stainless steel drip tray
- Self evaporating drainage system
- CFC-Free insulation

WLFD / RANGE



Technical Specifications

CODE	DIMENSIONS mm WxDxH	TEMP RANGE	SHELVES	CONTAINER 40FT	WEIGHT KG
WLFD75/100	1000x750x1950	-1 / +7°C	5	26	251kg
WLFD75/130	1300x750x1950	-1 / +7°C	5	22	313kg
WLFD75/180 (2x 13-amp supplies)	1800x750x1950	-1 / +7°C	5	13	420kg

2x 13A plugs which must be inserted into separate 13A sockets connected to a minimum 32A mains supply. The socket employed must be properly earthed, firmly installed and protected by 32-amp circuit breaker type C.

Frost Tech Stainless Steel Low Height Multideck

Low height, open fronted display units for the display of sandwiches, snacks and refreshments in busy retail stores, where space is scarce. (Maximum operating temperature upto 25°C/60%R/H)



SLD75/100

Chiller

Stainless Steel

Features

- Full length top mounted light
- Digital temperature control display
- Glass end panels for visibility
- 3 tier adjustable glass shelving plus base
- 304 Stainless Steel high grade finish
- Auto Electrical or Hot gas defrost
- 4 Adjustable feet
- Low energy compressors
- High performance long life fan motor
- Slide out condensing system,
- Stainless steel drip tray
- Self evaporating drainage system
- CFC-Free insulation

Technical Specifications

CODE	DIMENSIONS mm WxDxH	TEMP RANGE	SHELVES	CONTAINER 40FT	WEIGHT KG
SLD60/60	600x600x1350	-1 / +7°C	3	57	135kg
SLD60/100	1000x600x1350	-1 / +7°C	3	38	178kg
SLD60/120	1200x600x1350	-1 / +7°C	3	28	202kg
SLD60/180 (2x 13-amp supplies)	1800x600x1350	-1 / +7°C	3	19	250kg

2x 13A plugs which must be inserted into separate 13A sockets connected to a minimum 32A mains supply. The socket employed must be properly earthed, firmly installed and protected by 32-amp circuit breaker type C.

Frost Tech White Low Height Multideck

Low height, open fronted display units for the display of sandwiches, snacks and refreshments in busy retail stores.
(Maximum operating temperature upto 25°C/60%R/H)



WLD75/60 Chiller White Steel

Features

- Full length top mounted light
- Digital temperature control display
- Glass end panels for visibility
- 3 tier adjustable glass shelving plus base
- Auto Electrical or Hot gas defrost
- 4 Adjustable feet
- Low front to maximise display space
- Low energy compressors
- High performance long life fan motor
- Slide out condensing system,
- Stainless steel drip tray
- Self evaporating drainage system
- CFC-Free insulation

Multideck Cabinets

Technical Specifications

CODE	DIMENSIONS mm WxDxH	TEMP RANGE	SHELVES	CONTAINER 40FT	WEIGHT KG
WLD60/60	600x600x1350	-1 / +7°C	3	57	135kg
WLD60/100	1000x600x1350	-1 / +7°C	3	38	178kg
WLD60/120	1200x600x1350	-1 / +7°C	3	28	202kg
WLD60/180 (2x 13-amp supplies)	1800x600x1350	-1 / +7°C	3	19	250kg

2x 13A plugs which must be inserted into separate 13A sockets connected to a minimum 32A mains supply. The socket employed must be properly earthed, firmly installed and protected by 32-amp circuit breaker type C.

Patisserie/Serve Over Display Cabinets

ECO-FRIDGE UK 

The right display cabinet is a careful consideration for anyone who wishes to offer patisserie type products.

Frost Tech Black Patisserie Cabinet

These stylish black cabinets provide the perfect combination of high quality construction, with three adjustable glass shelves, a top mounted light, full curved glass front and sliding rear doors, making it a good alternative to the top of the range stainless steel. (Maximum operating temperature upto 25°C/60%R/H)



Features

- Full length top mounted light
- Full curved front glass for visibility
- 3 tier adjustable glass shelving plus base
- 4 Adjustable feet
- Low front to maximise display space
- Low energy compressors
- High performance long life fan motor
- Slide out condensing system,
- Stainless steel drip tray
- Self evaporating drainage system
- CFC-Free insulation

BP75/100 Chiller Black Steel

Technical Specifications

CODE	DIMENSIONS mm WxDxH	TEMP RANGE	SHELVES	CONTAINER 40FT	WEIGHT KG
BP75/100	1000x750x1350	+3 / +7°C	3	30	205kg
BP75/120	1200x750x1350	+3 / +7°C	3	24	236kg
BP75/150	1500x750x1350	+3 / +7°C	3	22	284kg

13A plugs which must be inserted into separate 13A sockets connected to a minimum 32A mains supply. The socket employed must be properly earthed, firmly installed and protected by 32-amp circuit breaker type C.

Frost Tech Stainless Steel Display Cabinets

Our top of the range stainless steel high quality cabinets provide the perfect opportunity to display your product, with its three adjustable glass shelves, a top mounted light, full curved glass front and sliding rear doors, making it ideal for your place of business. (Maximum operating temperature upto 25°C/60%R/H)



SP75/100 Chiller Stainless Steel



SP75/60 Chiller Stainless Steel

Features

- Full length top mounted light
- Digital temperature control display
- 3 tier adjustable glass shelving
- 304 Stainless Steel high grade finish
- Auto Electrical or Hot gas defrost
- 4 Adjustable feet
- CFC-Free insulation
- Low front to maximise display space
- Low energy compressors
- High performance long life fan motor
- Slide out condensing system
- Stainless steel drip tray
- Self evaporating drainage system

Technical Specifications

CODE	DIMENSIONS mm WxDxH	TEMP RANGE	SHELVES	CONTAINER 40FT	WEIGHT KG
SP75/60	600x750x1350	+3 / +7°C	3	45	159kg
SP75/100	1000x750x1350	+3 / +7°C	3	30	205kg
SP75/120	1200x750x1350	+3 / +7°C	3	24	236kg
SP75/150	1500x750x1350	+3 / +7°C	3	22	284kg
SP75/200	2000x750x1350	+3 / +7°C	3	15	315kg
SAP75/100	1000x750x1350	Ambient	3	30	180kg
SAP75/120	1200x750x1350	Ambient	3	24	195kg

13A plugs which must be inserted into separate 13A sockets connected to a minimum 32A mains supply. The socket employed must be properly earthed, firmly installed and protected by 32-amp circuit breaker type C.



Patisserie Cabinets

Frost Tech Top of the Range Energy Saving Stainless Steel Double Glazed Display Cabinets

Our curved glass double glazed display chiller, will save upto 20% on energy consumption which in turn will save you money, its ideal for any retail environment offering high display impact.



SP75/100 Double Glazed Chiller Stainless Steel

Features

- Full length top mounted Energy Saving LED light
- Digital temperature control display
- Double glazed curved front glass for visibility and Energy saving
- 3 tier adjustable glass shelving with LED lights plus base
- 304 Stainless Steel high grade finish
- Auto Electrical or Hot gas defrost
- 4 Adjustable feet
- Low front to maximise display space
- Low energy compressors
- High performance long life fan motor
- Slide out condensing system,
- Stainless steel drip tray
- Self evaporating drainage system
- CFC-Free insulation

Technical Specifications

CODE	DIMENSIONS mm WxDxH	TEMP RANGE	SHELVES	CONTAINER 40FT	WEIGHT KG
SP75/60 DG	600x750x1350	-1 / +7°C	3	45	159kg
SP75/100DG	1000x750x1350	-1 / +7°C	3	30	205kg
SP75/120DG	1200x750x1350	-1 / +7°C	3	24	236kg
SP75/150DG	1500x750x1350	-1 / +7°C	3	22	284kg
SP75/200DG	2000x750x1350	-1 / +7°C	3	15	315kg
SAP75/100DG	1000x750x1350	Ambient	3	30	180kg
SAP75/120DG	1200x750x1350	Ambient	3	24	195kg

13A plugs which must be inserted into separate 13A sockets connected to a minimum 32A mains supply. The socket employed must be properly earthed, firmly installed and protected by 32-amp circuit breaker type C.

Frost Tech Stainless Steel Open Display Cabinet

Curved open front display cases are ideal for any retail environment, offering high impact display with a large open area giving easy access for customers. (Maximum operating temperature upto 25°C/60%R/H)

Open fronted chiller



SOP75/100 Open Chiller Stainless Steel

Features

- Full length top mounted light
- Digital temperature control display
- Full curved front glass for visibility
- 3 tier adjustable glass shelving plus base
- 304 Stainless Steel high grade finish
- Auto Electrical or Hot gas defrost
- 4 Adjustable feet
- Low front to maximise display space
- Low energy compressors
- High performance long life fan motor
- Slide out condensing system
- Stainless steel drip tray
- Self evaporating drainage system
- CFC-Free insulation

Technical Specifications

CODE	DIMENSIONS mm WxDxH	TEMP RANGE	SHELVES	CONTAINER 40FT	WEIGHT KG
SOP75/100	1000x750x1350	+3 / +7°C	3	30	205kg

13A plugs which must be inserted into separate 13A sockets connected to a minimum 32A mains supply. The socket employed must be properly earthed, firmly installed and protected by 32-amp circuit breaker type C.



Patisserie Cabinets

Frost Tech Stainless Steel Flat Glass Display Cabinets

Our top of the range, flat glass stainless steel cabinets, provide the perfect opportunity to display your product, with three adjustable glass shelves, top light, full glass front and sliding rear doors, making it ideal for your place of business. (Maximum operating temperature upto 25°C/60%R/H)

Smart Curve

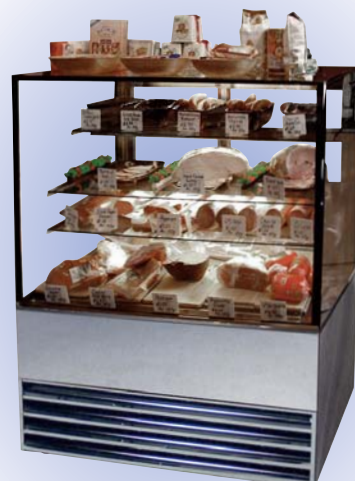


Features

- Full length top mounted light
- Digital temperature control display
- Large front flat glass for full visibility
- 3 tier adjustable glass shelving
- 304 Stainless Steel high grade finish
- Auto Electrical or Hot gas defrost
- 4 Adjustable feet
- Low front to maximise display space
- Low energy compressors
- High performance long life fan motor
- Slide out condensing system
- Stainless steel drip tray
- Self evaporating drainage system
- CFC-Free insulation



SP75/100SQ Chiller Stainless Steel Flat Glass



Double Glazed Option Available

Technical Specifications

CODE		DIMENSIONS mm WxDxH	TEMP RANGE	SHELVES	CONTAINER 40FT	WEIGHT KG
SP75/60SQ	Front Glass	600x750x1350	+3 / +7°C	3	45	159kg
SP75/100SQ	Front Glass	1000x750x1350	+3 / +7°C	3	30	205kg
SP75/120SQ	Front Glass	1200x750x1350	+3 / +7°C	3	24	236kg
SP75/150SQ	Front Glass	1500x750x1350	+3 / +7°C	3	22	284kg
SP75/200SQ	Front Glass	2000x750x1350	+3 / +7°C	3	15	315kg
SAP75/100SQ	Front Glass	1000x750x1350	Ambient	3	30	180kg
SAP75/120SQ	Front Glass	1200x750x1350	Ambient	3	24	195kg
S0P75/100SQ	Open Front	1000x750x1350	+3 / +7°C	3	24	198kg

13A plugs which must be inserted into separate 13A sockets connected to a minimum 32A mains supply. The socket employed must be properly earthed, firmly installed and protected by 32-amp circuit breaker type C.

Frost Tech Stainless Steel Flat Open Display Cabinets & Flat Glass Corner Cabinet

Open front display case are ideal for any retail environment, offering high impact display with a large open area giving easy access for customers. Our corner cabinet with its large flat front glass is ideal for displaying food that staff will serve to the customers. (Maximum operating temperature upto 25°C/60%R/H)



SCR75/175SQ Chiller Stainless Steel

Features

- Full length top mounted light
- Digital temperature control display
- Large flat front glass for great visibility (SCR75/175SQ only)
- 3 tier adjustable glass shelving
- 304 Stainless Steel high grade finish
- Auto Electrical or Hot gas defrost
- 4 Adjustable feet
- Low front to maximise display space
- Low energy compressors
- High performance long life fan motor
- Slide out condensing system,
- Stainless steel drip tray
- Self evaporating drainage system
- CFC-Free insulation

Technical Specifications

CODE		DIMENSIONS mm WxDxH	TEMP RANGE	SHELVES	CONTAINER 40FT	WEIGHT KG
SLD75/60SQ	Open Front	600x750x1350	+3 / +7°C	3	45	159kg
SLD75/100SQ	Open Front	1000x750x1350	+3 / +7°C	3	30	210kg
SLD75/120SQ	Open Front	1200x750x1350	+3 / +7°C	3	24	236kg
SLD75/150SQ	Open Front	1500x750x1350	+3 / +7°C	3	22	284kg
SLD75/200SQ	Open Front	2000x750x1350	+3 / +7°C	3	15	315kg
SCR75/175SQ	Front Glass	1750x750x1350	+3 / +7°C	3	15	355kg

(2x 13-amp supplies)

13A plugs which must be inserted into separate 13A sockets connected to a minimum 32A mains supply. The socket employed must be properly earthed, firmly installed and protected by 32-amp circuit breaker type C.



SLD75/60SQ Chiller Open Front

Frost Tech Stainless Steel Open Patisserie Cabinet (Costa-Coffee Spec)

When merchandising food and drink standard grab and go cabinets can't always fit the need, this is where our upmarket Costa Coffee delicatessen open fronted style cabinets are perfect for any retail and coffee shop environment. (Maximum operating temperature upto 25°C/60%R/H)



SLD75/120CC Chiller Stainless Steel



Features

- Full length top mounted LED light
- Digital temperature control display
- 3 tier adjustable glass shelving with LED under shelf lights
- 304 Stainless Steel high grade finnish
- Auto Electrical or Hot gas defrost
- 4 Adjustable feet
- CFC-Free insulation
- Low front to maximise display space
- Low energy compressors
- High performance long life fan motor
- Slide out condensing system
- Stainless steel drip tray
- Self evaporating drainage system
- 100mm Bottom venting needed

Technical Specifications

CODE	DIMENSIONS mm WxDxH	TEMP RANGE	SHELVES	CONTAINER 40FT	WEIGHT KG
SLD75/60CC	600x780x1500	+3 / +7°C	3	45	159kg
SLD75/90CC	900x780x1500	+3 / +7°C	3	30	205kg
SLD75/120CC	1200x780x1500	+3 / +7°C	3	24	236kg

13A plugs which must be inserted into seperate 13A sockets connected to a minimum 32A mains supply. The socket employed must be properly earthed, firmly installed and protected by 32-amp circuit breaker type C.

Frost Tech Stainless Steel Patisserie Cabinet (Costa-Coffee Spec)

Curved glass high performance patisserie display cabinets are ideal for outlets such as coffee shops where high quality refrigeration display is required. (Maximum operating temperature upto 25°C/60%R/H)



- Features**
- Full length top mounted light
 - Digital temperature control display
 - Full curved front glass for visibility
 - 3 tier adjustable glass shelving with lights plus base
 - 304 Stainless Steel high grade finnish
 - Auto Electrical or Hot gas defrost
 - 4 Adjustable feet
 - Low front to maximise display space
 - Low energy compressors
 - High performance long life fan motor
 - Slide out condensing system,
 - Stainless steel drip tray
 - Self everperating drainage system
 - CFC-Free insulation

Patisserie Cabinets

Technical Specifications

CODE	DIMENSIONS mm WxDxH	TEMP RANGE	SHELVES	CONTAINER 40FT	WEIGHT KG
SP75/60CC	600x770x1500	+3 / +7°C	3	45	160kg
SP75/90CC	900x770x1500	+3 / +7°C	3	30	207kg
SP75/120CC	1200x770x1500	+3 / +7°C	3	24	250kg

13A plugs which must be inserted into seperate 13A sockets connected to a minimum 32A mains supply. The socket employed must be properly earthed, firmly installed and protected by 32-amp circuit breaker type C.

Frost Tech Stainless Steel Double Glazed Hot Pastry Display

Double Glazed curved glass heater patisserie display cabinet has a stainless steel interior and exterior, with self closing rear glass doors and two adjustable perforated stainless steel shelves giving this cabinet a great display impact.



Features

- Full length top mounted light
- Energy saving double glazed curved front glass
- 2 adjustable shelf plus base
- 304 Stainless Steel high grade finish
- 4 Adjustable feet
- Low front to maximise display space
- CFC-Free insulation

Technical Specifications

CODE	DIMENSIONS mm WxDxH	TEMP RANGE	SHELVES	CONTAINER 40FT	WEIGHT KG
SHP75/100DG	1000x750x1350	+65 / +90°C	2	30	205kg

13A plugs which must be inserted into separate 13A sockets connected to a minimum 32A mains supply. The socket employed must be properly earthed, firmly installed and protected by 32-amp circuit breaker type C.

Premium Serve Over Display Cabinets

ECO-FRIDGE UK



Serve over counters are ideal for fresh produce such as meat, dairy, sandwich fillings and deli items. These are available in curved double glazed or white single glazed display options, as well as the choice between a slimline, or high capacity cabinet.

Frost-Tech Stainless Steel Double Glazed Serve Over Cabinets

Our double glazed fan assisted serve over cabinet will save you upto 30% on energy consumption which in turn will save you money, with Stainless Steel interior and exterior, under counter storage, ambient shelf and large display area its Ideal for fresh meat and any retail environment offering high display impact. (Maximum operating temperature upto 25°C/60%R/H)



Features

- Full length top mounted light
- Digital temperature control display
- Double glazed curved front glass
- 304 Stainless Steel high grade finnish
- Auto Electrical or Hot gas defrost
- Fan assisted cooling
- Ambient shelf
- 4 Adjustable feet
- Low energy compressors
- High performance long life fan motor
- Slide out condensing system,
- Stainless steel drip tray
- Self evaporating drainage system
- CFC-Free insulation

Technical Specifications

CODE	DIMENSIONS mm WxDxH	TEMP RANGE	SHELVES	CONTAINER 40FT	WEIGHT KG
SSO95/100DG	1000x950x1350	-1 / +7°C	1 Ambient	45	160kg
SSO95/120DG	1200x950x1350	-1 / +7°C	1 Ambient	30	207kg
SSO95/150DG	1500x950x1350	-1 / +7°C	1 Ambient	24	250kg
SSO95/200DG	2000x950x1350	-1 / +7°C	1 Ambient	24	250kg

13A plugs which must be inserted into separate 13A sockets connected to a minimum 32A mains supply. The socket employed must be properly earthed, firmly installed and protected by 32-amp circuit breaker type C.

Serve Over Cabinets

Frost Tech White High Capacity Serve Over Cabinets

Curved glass fan assisted serve-over cabinet offering high capacity together with a stainless steel serving shelf, an upper shelf is included for display of ambient products also includes bottom mounted storage. (Maximum operating temperature upto 25°C/60%R/H)



WSO100/210 Chiller White Steel

Features

- Full length top mounted light
- Digital temperature control display
- Full curved front glass for visibility
- 1 Ambient shelf plus base
- 4 Adjustable feet
- Low front to maximise display space
- Low energy compressors
- High performance long life fan motor
- Slide out condensing system,
- Stainless steel drip tray
- Self evaporating drainage system
- CFC-Free insulation
- Fan assisted cooling

Technical Specifications

CODE	DIMENSIONS mm WxDxH	TEMP RANGE	SHELVES	CONTAINER 40FT (STACKED)	WEIGHT KG
WSO100/110	1100x1000x1350	+3 / +7°C	1 Ambient	22 (44)	170kg
WSO100/130	1300x1000x1350	+3 / +7°C	1 Ambient	20 (40)	196kg
WSO100/160	1600x1000x1350	+3 / +7°C	1 Ambient	18 (36)	208kg
WSO100/210	2100x1000x1350	+3 / +7°C	1 Ambient	11 (22)	265kg
WSO100/250	2500x1000x1350	+3 / +7°C	1 Ambient	8 (16)	320kg

13A plugs which must be inserted into separate 13A sockets connected to a minimum 32A mains supply. The socket employed must be properly earthed, firmly installed and protected by 32-amp circuit breaker type C.

Frost Tech White Slimline Serve Over Cabinets

Curved glass fan assisted slimline serve over cabinet, perfect for shops with limited space with a stainless steel serving shelf, plus an upper shelf is included for display of ambient products also includes bottom mounted storage.(Maximum operating temperature upto 25°C/60%R/H)



WSO75/210 Chiller White Steel

Features

- Full length top mounted light
- Digital temperature control display
- Full curved front glass for visibility
- 1 Ambient shelf plus base
- 4 Adjustable feet
- Low front to maximise display space
- Low energy compressors
- High performance long life fan motor
- Slide out condensing system, stainless steel drip tray
- Self evaporating drainage system
- CFC-Free insulation
- Fan assisted

Technical Specifications

CODE	DIMENSIONS mm WxDxH	TEMP RANGE	SHELVES	CONTAINER 40FT (STACKED)	WEIGHT KG
WSO75/110	1100x750x1350	+3 / +7°C	1 Ambient	28 (56)	158kg
WSO75/130	1300x750x1350	+3 / +7°C	1 Ambient	23 (46)	180kg
WSO75/160	1600x750x1350	+3 / +7°C	1 Ambient	21 (42)	206kg
WSO75/210	2100x750x1350	+3 / +7°C	1 Ambient	14 (28)	256kg
WSO75/250	2500x750x1350	+3 / +7°C	1 Ambient	8 (16)	310kg

13A plugs which must be inserted into separate 13A sockets connected to a minimum 32A mains supply. The socket employed must be properly earthed, firmly installed and protected by 32-amp circuit breaker type C.

Upright Chiller & Freezer Display Cabinets

ECO-FRIDGE UK 

Frost Tech display chillers & freezers are the choice of many large organisations who depend on effective display of product. With excellent lighting & large capacities you can be sure that your products are being displayed to their best.

Frost Tech Upright High Spec Single Door Bottle Coolers

These display chillers are the choice of many large organisations who depend on effective display of product. With excellent lighting & large capacities you can be sure that your products are being displayed to their best. (Maximum operating temperature upto 32°C/60%R/H)



Features

- Aluminium interior for long life
- 2 Vertical strip lights
- 5 Adjustable heavy duty shelves
- Self closing triple glazed energy saving door
- 4 Castors for ease of cleaning
- 2 Front feet for leveling
- Digital temperature control display
- CFC-Free insulation
- High performance long life fan motor
- Low energy compressors
- Replaceable door gasket,
- Suitable for use in high ambient
- Stainless Steel drip tray, no rust
- Auto defrost

Options

- Additional shelves
- Branding options available
- R290 Refrigerant

Technical Specifications

CODE	REFRIGERANT	DIMENSIONS mm WxDxH	TEMP RANGE	SHELVES	CONTAINER 40FT	WEIGHT KG
UGC60	R404a	600x680x1970	+2 / +7°C	5	54	103kg
UGC60HC	R290 (factory order)	600x680x1970	+2 / +7°C	5	54	103kg

13A plugs which must be inserted into separate 13A sockets connected to a minimum 32A mains supply. The socket employed must be properly earthed, firmly installed and protected by 32-amp circuit breaker type C.

Frost Tech Upright High Spec Single Door Display Freezer

These display freezers are the choice of many large organisations who depend on effective display of product. With excellent lighting & large capacities you can be sure that your products are being displayed to their best. (Maximum operating temperature upto 32°C/60%R/H)



UGF60 Freezer White

Features

- Aluminium interior for long life
- 2 Vertical energy saving LED strip lights
- 5 Adjustable heavy duty shelves
- Self closing triple glazed energy saving door
- 4 Castors for ease of cleaning
- 2 Front feet for leveling
- Digital temperature control display
- CFC-Free insulation
- High performance long life fan motor
- Low energy compressors
- Replaceable door gasket,
- Suitable for use in high ambient
- Stainless Steel drip tray, no rust
- Auto defrost

Options

- Additional shelves
- Branding options available
- R290 Refrigerant

Technical Specifications

CODE	REFRIGERANT	DIMENSIONS mm WxDxH	TEMP RANGE	SHELVES	CONTAINER 40FT	WEIGHT KG
UGF60	R404a	600x680x1970	-18 / -24°C	5	54	127kg
UGF60HC	R290 (factory order)	600x680x1970	-18 / -24°C	5	54	127kg

13A plugs which must be inserted into separate 13A sockets connected to a minimum 32A mains supply. The socket employed must be properly earthed, firmly installed and protected by 32-amp circuit breaker type C.

Frost Tech Upright Double Sliding Door Bottle Coolers

These double door display chillers are the choice of many large organisations who depend on effective display of product. With excellent lighting & large capacities you can be sure that your products are being displayed to their best. (Maximum operating temperature upto 32°C/60%R/H)



USGC88 Chiller White Steel

Features

- Aluminium interior for long life
- 2 Vertical strip LED lights
- 5 Adjustable heavy duty shelves
- Self closing double glazed door
- 4 Castors for ease of cleaning
- 2 Front feet for leveling
- Digital temperature control display
- Auto defrost
- CFC-Free insulation
- High performance long life fan motor
- Low energy compressors
- Replaceable door gasket, ease of maintenance
- Suitable for use in high ambient
- Stainless Steel drip tray, no rust

Options

- Additional shelves
- Branding options available
- 115v / 60HZ
- R290 Refrigerant

Technical Specifications

CODE	REFRIGERANT	DIMENSIONS mm WxDxH	TEMP RANGE	SHELVES	CONTAINER 40FT	WEIGHT KG
USGC88	R404a	880x680x1970	+2 / +7°C	5	32	160kg
USGC88HC	R290 (factory order)	880x680x1970	+2 / +7°C	5	32	160kg

13A plugs which must be inserted into separate 13A sockets connected to a minimum 32A mains supply. The socket employed must be properly earthed, firmly installed and protected by 32-amp circuit breaker type C.

Frost Tech Upright Double Hinged Door Display Freezer

Hinged double door freezers with integrated LED side lighting. (Maximum operating temperature upto 32°C/60%R/H)



- Features**
- Aluminium interior for long life
 - 2 Vertical energy saving LED strip lights
 - Self closing triple glazed energy saving door
 - 4 Castors for ease of cleaning
 - 2 Front feet for leveling
 - Digital temperature control display
 - CFC-Free insulation
 - High performance long life fan motor
 - Low energy compressors
 - Replaceable door gasket, ease of maintenance
 - Suitable for use in high ambient
 - Stainless Steel drip tray, no rust

- Options**
- Additional shelves
 - Branding options available
 - R290 Refrigerant

Upright Display Freezer

Technical Specifications

CODE	REFRIGERANT	DIMENSIONS mm WxDxH	TEMP RANGE	SHELVES	CONTAINER 40FT	WEIGHT KG
UHGF88	R404a	880x680x1970	-18 / -24°C	5	32	160kg
UHGF88HC	R290 (factory order)	880x680x1970	-18 / -24°C	5	32	160kg

13A plugs which must be inserted into separate 13A sockets connected to a minimum 32A mains supply. The socket employed must be properly earthed, firmly installed and protected by 32-amp circuit breaker type C.

Frost Tech Upright High Spec Double sliding Door Display Cabinet

These double door display chillers are the choice of many large organisations who depend on effective display of product. With excellent lighting & large capacities you can be sure that your products are being displayed to their best. (Maximum operating temperature upto 32°C/60%R/H)



Features

- Aluminium interior for long life
- 2 Vertical strip LED lights
- 5 Adjustable heavy duty shelves
- Self closing double glazed door
- 4 Castors for ease of cleaning
- 2 Front feet for leveling
- Digital temperature control display
- Auto defrost
- CFC-Free insulation
- High performance long life fan motor
- Low energy compressors
- Replaceable door gasket, ease of maintenance
- Suitable for use in high ambient
- Stainless Steel drip tray, no rust

Options

- Additional shelves
- Branding options available
- R290 Refrigerant

USGC120 Chiller White Steel

Technical Specifications

CODE	REFRIGERANT	DIMENSIONS mm WxDxH	TEMP RANGE	SHELVES	CONTAINER 40FT	WEIGHT KG
USGC120	R404a	1200x680x1970	+2 / +7°C	5	25	195kg
USGC120HC	R290 (factory order)	1200x680x1970	+2 / +7°C	5	25	195kg

13A plugs which must be inserted into separate 13A sockets connected to a minimum 32A mains supply. The socket employed must be properly earthed, firmly installed and protected by 32-amp circuit breaker type C.

Frost Tech Upright Double Hinged Door Display Freezer

Hinged double door freezers with integrated LED side lighting. (Maximum operating temperature upto 32°C/60%R/H)



UHGF120 Freezer White Steel

Features

- Fan assisted
- Aluminium interior for long life
- 2 Vertical energy saving LED strip lights
- Self closing triple glazed energy saving door
- 4 Castors for ease of cleaning
- 2 Front feet for leveling
- Digital temperature control display
- CFC-Free insulation
- High performance long life fan motor
- Low energy compressors
- Replaceable door gasket, ease of maintenance
- Suitable for use in high ambient
- Stainless Steel drip tray, no rust

Options

- Additional shelves
- Branding options available
- R290 Refrigerant

Technical Specifications

CODE	REFRIGERANT	DIMENSIONS mm WxDxH	TEMP RANGE	SHELVES	CONTAINER 40FT	WEIGHT KG
UHGF120	R404a	1200x680x1970	-18 / -24°C	5	25	205kg
UHGF120HC	R290 (factory order)	1200x680x1970	-18 / -24°C	5	25	205kg

13A plugs which must be inserted into separate 13A sockets connected to a minimum 32A mains supply. The socket employed must be properly earthed, firmly installed and protected by 32-amp circuit breaker type C.

Frost Tech Hi-Capacity Upright Single Door Monoblock Display Cooler

High capacity Single door high spec upright bottle coolers with integrated side lighting.
(Maximum operating temperature upto 32°C/60%R/H)

Upright Display Chiller



UGC75 Chiller White Steel

Features

- Aluminium interior for long life
- 2 Vertical energy saving LED lights
- 5 Adjustable heavy duty shelves
- Self closing triple glazed energy saving door
- 4 Castors for ease of cleaning
- 2 Front feet for leveling
- Digital temperature control display
- Auto defrost
- CFC-Free insulation
- High performance long life fan motor
- Low energy compressors consumption
- Replaceable door gasket
- Suitable for use in high ambient
- Stainless Steel drip tray, no rust
- Monoblock chiller unit removable from above for simple and easy servicing and replacement

Options

- Additional shelves
- Branding options available
- R290 Refrigerant



Factory Order Top Monoblock

Technical Specifications

CODE	REFRIGERANT	DIMENSIONS mm WxDxH	TEMP RANGE	SHELVES	CONTAINER 40FT	WEIGHT KG
UGC75	R404a	750x800x1970	+2 / +7°C	5	39	160kg
UGC75HC	R290 (factory order)	750x800x1970	+2 / +7°C	5	39	160kg

13A plugs which must be inserted into separate 13A sockets connected to a minimum 32A mains supply. The socket employed must be properly earthed, firmly installed and protected by 32-amp circuit breaker type C.

Frost Tech Hi-Capacity Upright Single Door Monoblock Display Freezer

High capacity Single door high spec upright freezer with integrated side lights.
(Maximum operating temperature upto 32°C/60%R/H)



UGF75 Freezer White Steel

Features

- Aluminium interior for long life
- 2 Vertical energy saving LED lights
- 5 Adjustable heavy duty shelves
- Self closing triple glazed energy saving door
- 4 Castors for ease of cleaning
- 2 Front feet for leveling
- Digital temperature control display
- Auto defrost
- CFC-Free insulation
- High performance long life fan motor
- Low energy compressors consumption
- Replaceable door gasket
- Suitable for use in high ambient
- Stainless Steel drip tray, no rust
- Monoblock chiller unit removable from above for simple and easy servicing and replacement

Options

- Additional shelves
- Branding options available
- R290 Refrigerant



Factory Order Top Monoblock

Technical Specifications

CODE	REFRIGERANT	DIMENSIONS mm WxDxH	TEMP RANGE	SHELVES	CONTAINER 40FT	WEIGHT KG
UGF75	R404a	750x800x1970	-18 / -24°C	5	39	160kg
UGF70HC	R290 (factory order)	750x800x1970	-18 / -24°C	5	39	160kg

13A plugs which must be inserted into separate 13A sockets connected to a minimum 32A mains supply. The socket employed must be properly earthed, firmly installed and protected by 32-amp circuit breaker type C.

Frost Tech Hi-Capacity Upright Single Door Canopy Bottle Coolers

High capacity Single door high spec upright bottle coolers with integrated LED side lighting and illuminated canopy. (Maximum operating temperature upto 32°C/60%R/H)



UGC70 Chiller White Steel

Features

- Aluminium interior for long life
- 2 Vertical energy saving LED lights
- 5 Adjustable heavy duty shelves
- Self closing triple glazed energy saving door
- 4 Castors for ease of cleaning
- 2 Front feet for leveling
- Digital temperature control display
- Auto defrost
- CFC-Free insulation
- High performance long life fan motor
- Low energy compressors consumption
- Replaceable door gasket
- Suitable for use in high ambient
- Stainless Steel drip tray, no rust
- Display Canopy

Options

- Additional shelves
- Branding options available
- R290 Refrigerant

Technical Specifications

CODE	REFRIGERANT	DIMENSIONS mm WxDxH	TEMP RANGE	SHELVES	CONTAINER 40FT	WEIGHT KG
UGC70	R404a	700x800x2006	+2 / +7°C	5	39	165kg
UGC70HC	R290 (factory order)	700x800x2006	+2 / +7°C	5	39	165kg

13A plugs which must be inserted into separate 13A sockets connected to a minimum 32A mains supply. The socket employed must be properly earthed, firmly installed and protected by 32-amp circuit breaker type C.

Frost Tech Hi-Capacity Upright Single Door Canopy Display Freezer

Single door high-capacity upright freezer with integrated side lights and illuminated canopy. (Maximum operating temperature upto 32°C/60%R/H)



UGF70 Freezer White Steel

Features

- Aluminium interior for long life
- 2 Vertical energy saving LED lights
- 5 Adjustable heavy duty shelves
- Self closing triple glazed energy saving door
- 4 Castors for ease of cleaning
- 2 Front feet for leveling
- Digital temperature control display
- Auto defrost
- CFC-Free insulation
- High performance long life fan motor
- Low energy compressors consumption
- Replaceable door gasket
- Suitable for use in high ambient
- Stainless Steel drip tray, no rust

Options

- Additional shelves
- Branding options available
- R290 Refrigerant

Technical Specifications

CODE	REFRIGERANT	DIMENSIONS mm WxDxH	TEMP RANGE	SHELVES	CONTAINER 40FT	WEIGHT KG
UGF70	R404a	700x800x2006	-18 / -24°C	5	39	165kg
UGF70HC	R290 (factory order)	700x800x2006	-18 / -24°C	5	39	165kg

13A plugs which must be inserted into separate 13A sockets connected to a minimum 32A mains supply. The socket employed must be properly earthed, firmly installed and protected by 32-amp circuit breaker type C.

Frost Tech Hi-Capacity Upright Double Door Canopy Bottle Coolers

Hinged double door high-capacity bottle coolers with integrated LED side lighting illuminated canopy.
(Maximum operating temperature upto 32°C/60%R/H)

Upright Display Chiller



UHGC100 Chiller White Steel

Features

- Aluminium interior for long life
- 2 Vertical energy saving LED lights
- 5 Adjustable heavy duty shelves
- Self closing triple glazed door
- 4 Castors for ease of cleaning
- 2 Front feet for leveling
- Digital temperature control display
- Auto defrost
- CFC-Free insulation
- High performance long life fan motor
- Low energy compressors consumption
- Replaceable door gasket
- Suitable for use in high ambient
- Stainless Steel drip tray, no rust
- Display Canopy

Options

- Additional shelves
- Branding options available
- R290 Refrigerant

Technical Specifications

CODE	REFRIGERANT	DIMENSIONS mm WxDxH	TEMP RANGE	SHELVES	CONTAINER 40FT	WEIGHT KG
UHGC100	R404a	1000x800x2006	+2 / +7°C	5	26	205kg
UHGC100HC	R290 (factory order)	1000x800x2006	+2 / +7°C	5	26	205kg

13A plugs which must be inserted into separate 13A sockets connected to a minimum 32A mains supply. The socket employed must be properly earthed, firmly installed and protected by 32-amp circuit breaker type C.

Frost Tech Hi-Capacity Upright Double Door Canopy Display Freezer

Hinged double door high-capacity freezers with integrated LED side lighting and illuminated canopy. (Maximum operating temperature upto 32°C/60%R/H)



UHGF100 Freezer White Steel

Features

- Aluminium interior for long life
- 2 Vertical energy saving LED lights
- 5 Adjustable heavy duty shelves
- Self closing triple glazed door
- 4 Castors for ease of cleaning
- 2 Front feet for leveling
- Digital temperature control display
- Auto defrost
- CFC-Free insulation
- High performance long life fan motor
- Low energy compressors consumption
- Replaceable door gasket
- Suitable for use in high ambient
- Stainless Steel drip tray, no rust

Options

- Additional shelves
- Branding options available
- R290 Refrigerant

Upright Display Freezer

Technical Specifications

CODE	REFRIGERANT	DIMENSIONS mm WxDxH	TEMP RANGE	SHELVES	CONTAINER 40FT	WEIGHT KG
UHGF100	R404a	1000x800x2006	-18 / -24°C	5	26	214kg
UHGF100HC	R290 (factory order)	1000x800x2006	-18 / -24°C	5	26	214kg

13A plugs which must be inserted into separate 13A sockets connected to a minimum 32A mains supply. The socket employed must be properly earthed, firmly installed and protected by 32-amp circuit breaker type C.

Frost Tech Hi-Capacity Upright Double Door Canopy Bottle Coolers

Sliding double door high-capacity bottle coolers with integrated LED side lighting and illuminated canopy. (Maximum operating temperature upto 32°C/60%R/H)



USGC100 Chiller White Steel

Features

- Aluminium interior for long life
- 2 Vertical energy saving LED lights
- 5 Adjustable heavy duty shelves
- Self closing triple glazed door
- 4 Castors for ease of cleaning
- 2 Front feet for leveling
- Digital temperature control display
- Auto defrost
- CFC-Free insulation
- High performance long life fan motor
- Low energy compressors consumption
- Replaceable door gasket
- Suitable for use in high ambient
- Stainless Steel drip tray, no rust
- Display Canopy

Options

- Additional shelves
- Branding options available
- R290 Refrigerant

Technical Specifications

CODE	REFRIGERANT	DIMENSIONS mm WxDxH	TEMP RANGE	SHELVES	CONTAINER 40FT	WEIGHT KG
USGC100	R404a	1000x800x2006	+2 / +7°C	5	26	205kg
USGC100HC	R290 (factory order)	1000x800x2006	+2 / +7°C	5	26	205kg

13A plugs which must be inserted into separate 13A sockets connected to a minimum 32A mains supply. The socket employed must be properly earthed, firmly installed and protected by 32-amp circuit breaker type C.

Frost Tech Stainless Steel Half Height Single Door Chiller

Half height high spec glass door bottle cooler with integrated top mounted light. (Maximum operating temperature upto 32°C/60%R/H)



HGC60S Chiller Stainless Steel

Features

- Aluminium interior for long life
- Full length top mounted light
- 2 Adjustable heavy duty shelves
- Triple glazed door
- 4 Adjustable feet for leveling
- Digital temperature control display
- Auto defrost
- CFC-Free insulation
- High performance long life fan motor
- Low energy compressors
- Replaceable door gasket
- Suitable for use in high ambient
- Stainless Steel drip tray, no rust

Options

- Additional shelves
- Branding options available
- R290 Refrigerant

Technical Specifications

CODE	REFRIGERANT	DIMENSIONS mm WxDxH	TEMP RANGE	SHELVES	CONTAINER 40FT	WEIGHT KG
HGC60S	R134a	600x640x900	+2 / +7°C	2	108	53kg
HGC60SHC	R290 (factory order)	600x640x900	+2 / +7°C	2	108	53kg
HGF60S	R404a	600x640x900	-18 / -24°C	2 Static	108	53kg

13A plugs which must be inserted into separate 13A sockets connected to a minimum 32A mains supply. The socket employed must be properly earthed, firmly installed and protected by 32-amp circuit breaker type C.

Half Height Freezer

Frost Tech Black Half Height Single Door Display Chiller

Black half height high spec glass door display chiller with integrated top mounted light.
(Maximum operating temperature upto 32°C/60%R/H)



HGC60B Chiller Black Steel

Features

- Full length top mounted light
- 3 Adjustable heavy duty shelves
- 4 Adjustable feet for leveling
- Digital temperature control display
- Auto defrost
- CFC-Free insulation
- High performance long life fan motor
- Low energy compressors
- Replaceable door gasket
- Suitable for use in high ambient

Options

- Additional shelves
- Branding options available
- R290 Refrigerant

Technical Specifications

CODE	REFRIGERANT	DIMENSIONS mm WxDxH	TEMP RANGE	SHELVES	CONTAINER 40FT	WEIGHT KG
HGC60B	R134a	600x640x900	+2 / +7°C	3	108	53kg
HGC60BHC	R290 (factory order)	600x640x900	+2 / +7°C	3	108	53kg

13A plugs which must be inserted into separate 13A sockets connected to a minimum 32A mains supply. The socket employed must be properly earthed, firmly installed and protected by 32-amp circuit breaker type C.

Frost Tech Black Upright High Spec Single Door Bottle Coolers

Single door high spec black upright display bottle cooler with integrated side lights.
(Maximum operating temperature upto 32°C/60%R/H)



Features

- Aluminium interior for long life
- 2 Vertical energy saving strip lights
- 5 Adjustable heavy duty shelves
- Self closing triple glazed door
- 4 Castors for ease of cleaning
- 2 Front feet for leveling
- Digital temperature control display
- Auto defrost
- CFC-Free insulation
- High performance long life fan motor
- Low energy compressors consumption
- Replaceable door gasket
- Suitable for use in high ambient
- Stainless Steel drip tray, no rust
- Display Canopy

Options

- Additional shelves
- Branding options available
- R290 Refrigerant

Upright Display Freezer

Technical Specifications

CODE	REFRIGERANT	DIMENSIONS mm WxDxH	TEMP RANGE	SHELVES	CONTAINER 40FT	WEIGHT KG
UGC60B	R404a	600x680x1970	+2 / +7°C	5	54	103kg
UGC60BHC	R290 (factory order)	600x680x1970	+2 / +7°C	5	54	103kg

13A plugs which must be inserted into separate 13A sockets connected to a minimum 32A mains supply. The socket employed must be properly earthed, firmly installed and protected by 32-amp circuit breaker type C.

Wine/Cigar Display Cabinets

ECO-FRIDGE UK 

Frost Tech wine chillers and cigar humidor are ideally suited for bars, restaurants and clubs, as well as for domestic use.

Frost Tech Half Height Single Door Wine Cooler

Half height high spec glass door wine bottle cooler with integrated top mounted light.
(Maximum operating temperature upto 32°C/60%R/H)



HGC60BW Chiller Black Steel

Features

- Full length top mounted light
- 4 Adjustable heavy duty shelves
- 4 Adjustable feet for leveling
- Digital temperature control display
- Auto defrost
- CFC-Free insulation
- High performance long life fan motor
- Low energy compressors
- Replaceable door gasket
- Suitable for use in high ambient

Options

- Additional shelves
- Branding options available
- R290 Refrigerant

Technical Specifications

CODE	REFRIGERANT	DIMENSIONS mm WxDxH	TEMP RANGE	SHELVES	CONTAINER 40FT	WEIGHT KG
HGC60BW	R134a	600x640x900	+4 / +15°C	4	108	53kg
HGC60BWHC	R290 (factory order)	600x640x900	+4 / +15°C	4	108	53kg

13A plugs which must be inserted into separate 13A sockets connected to a minimum 32A mains supply. The socket employed must be properly earthed, firmly installed and protected by 32-amp circuit breaker type C.

Frost Tech Upright Hi-Capacity Single Door Wine Cooler

High capacity Single door high spec upright wine bottle cooler with integrated top mounted light. (Maximum operating temperature upto 32°C/60%R/H)



UGC60BW Chiller Black Steel

Features

- Full length side mounted light
- 13 Adjustable heavy duty shelves
- Double glazed door
- 4 Adjustable feet for leveling
- Digital temperature control display
- Auto defrost
- CFC-Free insulation
- High performance long life fan motor
- Low energy compressors
- Replaceable door gasket
- Suitable for use in high ambient
- Stainless Steel drip tray, no rust
- Bottle Capacity 48

Options

- Additional shelves
- Branding options available
- R290 Refrigerant

Technical Specifications

CODE	REFRIGERANT	DIMENSIONS mm WxDxH	TEMP RANGE	SHELVES	CONTAINER 40FT	WEIGHT KG
UGC60BW	R404a	600x680x1970	+4 / +15°C	8	54	118kg
UGC60BWHC	R290 (factory order)	600x680x1970	+4 / +15°C	8	54	118kg

13A plugs which must be inserted into separate 13A sockets connected to a minimum 32A mains supply. The socket employed must be properly earthed, firmly installed and protected by 32-amp circuit breaker type C.

Upright Wine Chiller

Frost Tech Upright & Half Height Single Door Cigar humidor Cabinet

Upright and half height high spec glass door cigar humidor cabinet with integrated LED mounted lights. (Maximum operating temperature upto 32°C/60%R/H)



Features

- Full length top mounted & side lights
- 4 wood shelves
- Double glazed door
- 4 Adjustable feet for leveling
- Digital temperature control display
- High performance long life fan motor
- Low energy compressors

Options

- Additional shelves
- Branding options available



Technical Specifications

CODE	REFRIGERANT	DIMENSIONS mm WxDxH	TEMP RANGE	SHELVES	CONTAINER 40FT	WEIGHT KG
HGC60BC	R134a	600x640x900	+5 / +22°C	4	108	53kg
UGC60BC	R404a	600x640x1900	+5 / +22°C	4	54	118kg

13A plugs which must be inserted into separate 13A sockets connected to a minimum 32A mains supply. The socket employed must be properly earthed, firmly installed and protected by 32-amp circuit breaker type C.

Chilled & Frozen Storage Cabinets

ECO-FRIDGE UK



Whether you operate a small snack shop or busy restaurant, Frost Tech has the ideal service chiller or freezer for your needs. Ranging from under-counter to full height, heavy duty commercial specification.

Frost Tech Upright Heavy Duty, High Spec Single Door Storage Cabinet

Ideal for outlets where full height storage is a necessity. These units are of true commercial construction offering high capacity and durability. (Maximum operating temperature upto 43°C/60%R/H)



USC60 Chiller White Steel

Features

- Aluminium interior for long life
- 5 Adjustable heavy duty shelves
- Adjustable feet for leveling
- 4 Castors for good movability
- Digital temperature control display
- Auto defrost
- CFC-Free insulation
- High performance long life fan motor
- Low energy compressors
- Replaceable door gasket
- Suitable for use in high ambient
- Stainless Steel drip tray, no rust

Options

- Additional shelves
- Branding options available
- R290 Refrigerant

Technical Specifications

CODE	REFRIGERANT	DIMENSIONS mm WxDxH	TEMP RANGE	SHELVES	CONTAINER 40FT	WEIGHT KG
USC60	R404a	600x680x1970	+2 / +7°C	5	54	117kg
USC60HC	R290 (factory order)	600x680x1970	+2 / +7°C	5	54	117kg
USF60	R404a	600x680x1970	-18 / -24°C	5	54	124kg
USF60HC	R290 (factory order)	600x680x1970	-18 / -24°C	5	54	124kg

13A plugs which must be inserted into separate 13A sockets connected to a minimum 32A mains supply. The socket employed must be properly earthed, firmly installed and protected by 32-amp circuit breaker type C.

Upright Storage Chiller

Frost Tech Upright Heavy Duty Hi-Capacity Storage Cabinet

This high capacity single door cabinet is ideal for outlets where full height storage is a necessity. These units are of true commercial construction offering long lasting durability.
(Maximum operating temperature upto 43°C/60%R/H)



Features

- Aluminium interior for long life
- 5 Adjustable heavy duty shelves
- Adjustable feet for leveling
- 4 Castors for good movability
- Digital temperature control display
- Auto defrost
- CFC-Free insulation
- High performance long life fan motor
- Low energy compressors
- Replaceable door gasket
- Suitable for use in high ambient
- Stainless Steel drip tray, no rust

Options

- Additional shelves
- Branding options available
- R290 Refrigerant

USC75 Chiller White Steel

Technical Specifications

CODE	REFRIGERANT	DIMENSIONS mm WxDxH	TEMP RANGE	SHELVES	CONTAINER 40FT	WEIGHT KG
USC75	R404a	750x800x1970	+2 / +7°C	5	54	117kg
USC75HC	R290 (factory order)	750x800x1970	+2 / +7°C	5	54	117kg
USF75	R404a	750x800x1970	-18 / -24°C	5	54	124kg
USF75HC	R290 (factory order)	750x800x1970	-18 / -24°C	5	54	124kg

13A plugs which must be inserted into separate 13A sockets connected to a minimum 32A mains supply. The socket employed must be properly earthed, firmly installed and protected by 32-amp circuit breaker type C.

Frost Tech Upright Heavy Duty Extra Large Storage Cabinet

Ideal for outlets where full height storage is a necessity. These units are of true commercial construction offering the highest capacity and durability from a single door cabinet.
(Maximum operating temperature upto 43°C/60%R/H)



USC88 Chiller White Steel

Features

- Aluminium interior for long life
- 5 Adjustable heavy duty shelves
- Adjustable feet for leveling
- 4 Castors for good movability
- Digital temperature control display
- Auto defrost
- CFC-Free insulation
- High performance long life fan motor
- Low energy compressors
- Replaceable door gasket
- Suitable for use in high ambient
- Stainless Steel drip tray, no rust

Options

- Additional shelves
- Branding options available
- R290 Refrigerant

Technical Specifications

CODE	REFRIGERANT	DIMENSIONS mm WxDxH	TEMP RANGE	SHELVES	CONTAINER 40FT	WEIGHT KG
USC88	R404a	880x680x1970	+2 / +7°C	5	32	136kg
USC88HC	R290 (factory order)	880x680x1970	+2 / +7°C	5	32	136kg
USF88	R404a	880x680x1970	-18 / -24°C	5	32	148kg
USF88HC	R290 (factory order)	880x680x1970	-18 / -24°C	5	32	148kg

13A plugs which must be inserted into separate 13A sockets connected to a minimum 32A mains supply. The socket employed must be properly earthed, firmly installed and protected by 32-amp circuit breaker type C.



Upright Storage Chiller

Frost Tech Upright Heavy Duty Double Door Storage Cabinet

Ideal for outlets where full height storage is a necessity. These units are of true commercial construction offering high capacity and durability. (Maximum operating temperature upto 43°C/60%R/H)



Features

- Aluminium interior for long life
- 5 Adjustable heavy duty shelves
- Adjustable feet for leveling
- 4 Castors for good movability
- Digital temperature control display
- Auto defrost
- CFC-Free insulation
- High performance long life fan motor
- Low energy compressors
- Replaceable door gasket
- Suitable for use in high ambient
- Stainless Steel drip tray, no rust

Options

- Additional shelves
- Branding options available
- R290 Refrigerant

USC120 Chiller White Steel

Technical Specifications

CODE	REFRIGERANT	DIMENSIONS mm WxDxH	TEMP RANGE	SHELVES	CONTAINER 40FT	WEIGHT KG
USC120	R404a	1200x680x1970	+2 / +7°C	5	25	162kg
USC120HC	R290 (factory order)	1200x680x1970	+2 / +7°C	5	25	162kg
USF120	R404a	1200x680x1970	-18 / -24°C	5	25	175kg
USF120HC	R290 (factory order)	1200x680x1970	-18 / -24°C	5	25	175kg

13A plugs which must be inserted into separate 13A sockets connected to a minimum 32A mains supply. The socket employed must be properly earthed, firmly installed and protected by 32-amp circuit breaker type C.

Frost Tech Stainless Steel Upright Heavy Duty Single Door Storage Cabinet

Ideal for outlets where full height storage is a necessity. These Stainless Steel units are of true commercial construction offering high capacity and durability. (Maximum operating temperature upto 43°C/60%R/H)



USC60 Chiller Stainless Steel

Features

- Aluminium interior for long life
- 5 Adjustable heavy duty shelves
- Adjustable feet for leveling
- 4 Castors for good movability
- Digital temperature control display
- Auto defrost
- CFC-Free insulation
- High performance long life fan motor
- Low energy compressors
- Replaceable door gasket
- Suitable for use in high ambient
- Stainless Steel drip tray, no rust

Options

- Additional shelves
- R290 Refrigerant

Technical Specifications

CODE	REFRIGERANT	DIMENSIONS mm WxDxH	TEMP RANGE	SHELVES	CONTAINER 40FT	WEIGHT KG
USC60S	R404a	600x680x1970	+2 / +7°C	5	54	122kg
USC60SHC	R290 (factory order)	600x680x1970	+2 / +7°C	5	54	122kg
USF60S	R404a	600x680x1970	-18 / -24°C	5	54	125kg
USF60SHC	R290 (factory order)	600x680x1970	-18 / -24°C	5	54	125kg

13A plugs which must be inserted into separate 13A sockets connected to a minimum 32A mains supply. The socket employed must be properly earthed, firmly installed and protected by 32-amp circuit breaker type C.



Upright Storage Chiller

Frost Tech Upright Heavy Duty Hi-Capacity Storage Cabinet

This high capacity single door cabinet is ideal for outlets where full height storage is a necessity. These stainless steel units are of true commercial construction offering long lasting durability. (Maximum operating temperature upto 43°C/60%R/H)



Features

- Aluminium interior for long life
- 5 Adjustable heavy duty shelves
- Adjustable feet for leveling
- 4 Castors for good movability
- Digital temperature control display
- Auto defrost
- CFC-Free insulation
- High performance long life fan motor
- Low energy compressors
- Replaceable door gasket
- Suitable for use in high ambient
- Stainless Steel drip tray, no rust

Options

- Additional shelves
- R290 Refrigerant

USC75S Chiller Stainless Steel

Technical Specifications

CODE	REFRIGERANT	DIMENSIONS mm WxDxH	TEMP RANGE	SHELVES	CONTAINER 40FT	WEIGHT KG
USC75S	R404a	750x800x1970	+2 / +7°C	5	39	150kg
USC75SHC	R290 (factory order)	750x800x1970	+2 / +7°C	5	39	150kg
USF75S	R404a	750x800x1970	-18 / -24°C	5	39	153kg
USF75SHC	R290 (factory order)	750x800x1970	-18 / -24°C	5	39	153kg

13A plugs which must be inserted into separate 13A sockets connected to a minimum 32A mains supply. The socket employed must be properly earthed, firmly installed and protected by 32-amp circuit breaker type C.

Frost Tech Upright Heavy Duty Extra Large Storage Cabinet

Ideal for outlets where full height storage is a necessity. These Stainless Steel units are of true commercial construction offering high capacity and durability. (Maximum operating temperature upto 43°C/60%R/H)



Features

- Aluminium interior for long life
- 5 Adjustable heavy duty shelves
- Adjustable feet for leveling
- 4 Castors for good movability
- Digital temperature control display
- Auto defrost
- CFC-Free insulation
- High performance long life fan motor
- Low energy compressors
- Replaceable door gasket
- Suitable for use in high ambient
- Stainless Steel drip tray, no rust

Options

- Additional shelves
- R290 Refrigerant

Upright Storage Chiller

Technical Specifications

CODE	REFRIGERANT	DIMENSIONS mm WxDxH	TEMP RANGE	SHELVES	CONTAINER 40FT	WEIGHT KG
USC88S	R404a	880x680x1970	+2 / +7°C	5	32	152kg
USC88SHC	R290 (factory order)	880x680x1970	+2 / +7°C	5	32	152kg
USF88S	R404a	880x680x1970	-18 / -24°C	5	32	165kg
USF88SHC	R290 (factory order)	880x680x1970	-18 / -24°C	5	32	165kg

13A plugs which must be inserted into separate 13A sockets connected to a minimum 32A mains supply. The socket employed must be properly earthed, firmly installed and protected by 32-amp circuit breaker type C.

Frost Tech Upright Heavy Duty Hi-Capacity Storage Cabinet

This high capacity single door cabinet is ideal for outlets where full height storage is a necessity. These stainless steel units are of true commercial construction offering long lasting durability. (Maximum operating temperature upto 43°C/60%R/H)



Features

- Aluminium interior for long life
- 5 Adjustable heavy duty shelves
- Adjustable feet for leveling
- 4 Castors for good movability
- Digital temperature control display
- Auto defrost
- CFC-Free insulation
- High performance long life fan motor
- Low energy compressors
- Replaceable door gasket
- Suitable for use in high ambient
- Stainless Steel drip tray, no rust

Options

- Additional shelves
- R290 Refrigerant

USC120S Chiller Stainless Steel

Technical Specifications

CODE	REFRIGERANT	DIMENSIONS mm WxDxH	TEMP RANGE	SHELVES	CONTAINER 40FT	WEIGHT KG
USC120S	R404a	1200x680x1970	+2 / +7°C	5	39	150kg
USC120SHC	R290 (factory order)	1200x680x1970	+2 / +7°C	5	39	150kg
USF120S	R404a	1200x680x1970	-18 / -24°C	5	39	153kg
USF120SHC	R290 (factory order)	1200x680x1970	-18 / -24°C	5	39	153kg

13A plugs which must be inserted into separate 13A sockets connected to a minimum 32A mains supply. The socket employed must be properly earthed, firmly installed and protected by 32-amp circuit breaker type C.

Frost Tech Heavy Duty Stainless Steel Under Counter Cabinet

Ideal for food and coffee outlets, these compact units can be built in and pushed back against the wall thanks to their front venting design. These units are of true commercial construction offering high durability. (Maximum operating temperature upto 43°C/60%R/H)



SUC60 Chiller Stainless Steel

Features

- Aluminium interior for long life
- 2 Adjustable heavy duty shelves
- 4 Adjustable feet for leveling
- Digital temperature control display
- Auto defrost
- CFC-Free insulation
- High performance long life fan motor
- Low energy compressors
- Replaceable door gasket, ease of maintenance
- Suitable for use in high ambient
- Stainless Steel drip tray, no rust

Options

- Additional shelves
- R290 Refrigerant

Technical Specifications

CODE	REFRIGERANT	DIMENSIONS mm WxDxH	TEMP RANGE	SHELVES	CONTAINER 40FT	WEIGHT KG
SUC60	R134a	600x600x900	+2 / +7°C	2	108	53kg
SUC60HC	R290 (factory order)	600x600x900	+2 / +7°C	2	108	53kg
SUF60	R404a	600x600x900	-18 / -24°C	2 Static	108	53kg
SUF60HC	R290 (factory order)	600x600x900	-18 / -24°C	2 Static	108	53kg

13A plugs which must be inserted into separate 13A sockets connected to a minimum 32A mains supply. The socket employed must be properly earthed, firmly installed and protected by 32-amp circuit breaker type C.



Under Storage Chiller

Premier Stainless Steel Catering Cabinets

ECO-FRIDGE UK



Frost Tech wine chillers and cigar humidor are ideally suited for bars, restaurants and clubs, as well as for domestic use.

Frost Tech Stainless Steel Heavy Duty Catering Chillers / Freezers

Stainless steel service cabinets are ideal for absolutely any catering environment requiring high volume storage. (Maximum operating temperature upto 43°C/60%R/H)



GN740 Chiller Stainless Steel

Features

- 304 grade Stainless Steel interior/exterior
- Replaceable door gasket
- Digital temperature controller
- Mounted on castors
- Fitted locks to all doors
- Gastronorm compatible
- Insulation 75mm thick in water based polyurethan foam with density approx. 42 kg/m³
- Magnetic door gasket on sides with counter magnet on gasket ledges
- Door in AISI 304 18/10 stainless steel (Satin Finish)
- Ergonomic full height door handle
- Lader rack in AISI 304 18/10 stainless steel, removable without use of tools for easy cleaning
- Monoblock ceiling system to enable use of the entire refrigerated volume
- Monoblock chiller unit removable from above for simple and easy servicing and replacement
- Refrigerant R404a chiller and freezer
- Controlled forced air cooling system to guarantee the maximum efficiency and uniformity throughout the cabinet
- Automatic defrost cycles for energy savings
- Defrost water evaporation system with superheated gas for appliances with remote cooling unit, defrost water evaporation by means of thermostatic resistor
- Control for adjusting the relative humidity inside the cabinet from a minimum to a maximum
- Control equipped with cabinet probe, evaporator probe and condenser probe
- Compressor protected by overheat cut out with automatic reset
- Evaporator fan stops automatically when door is opened
- Alarm signalling tempature controler

Options

- Additional shelves
- Feet

Technical Specifications

CODE	REFRIGERANT	DIMENSIONS mm WxDxH	TEMP RANGE	SHELVES	CONTAINER 40FT	WEIGHT KG
GN740	R404a	739x830x2000 (589x685x1383)	-3 / +7°C	4	42	134kg
GN740F	R404a	739x830x2000 (589x685x1383)	-18 / -24°C	4	42	135kg

13A plugs which must be inserted into sepearte 13A sockets connected to a minimum 32A mains supply. The socket employed must be properly earthed, firmly installed and protected by 32-amp circuit breaker type C.

Frost Tech Stainless Steel Heavy Duty Catering Chillers / Freezers

Stainless steel service cabinets are ideal for absolutely any catering environment requiring high volume storage. (Maximum operating temperature upto 43°C/60%R/H)



GN1400 Chiller Stainless Steel

Features

- 304 grade Stainless Steel interior/exterior
- Replaceable door gasket
- Digital temperature controller
- Mounted on castors
- Fitted locks to all doors
- Gastronorm compatible
- Insulation 75mm thick in water based polyurethan foam with density approx. 42 kg/m³
- Magnetic door gasket on sides with counter magnet on gasket ledges
- Door in AISI 304 18/10 stainless steel (Satin Finish)
- Ergonomic full height door handle
- Lader rack in AISI 304 18/10 stainless steel, removable without use of tools for easy cleaning
- Monoblock ceiling system to enable use of the entire refrigerated volume
- Monoblock chiller unit removable from above for simple and easy servicing and replacement
- Refrigerant R404a chiller and freezer
- Controlled forced air cooling system to guarantee the maximum efficiency and uniformity throughout the cabinet
- Automatic defrost cycles for energy savings
- Defrost water evaporation system with superheated gas for appliances with remote cooling unit, defrost water evaporation by means of thermostatic resistor
- Control for adjusting the relative humidity inside the cabinet from a minimum to a maximum
- Control equipped with cabinet probe, evaporator probe and condenser prob
- Compressor protected by overheat cut out with automatic reset
- Evaporator fan stops automatically when door is opened
- Alarm signalling tempature controler

Options

- Additional shelves
- Feet

Technical Specifications

CODE	REFRIGERANT	DIMENSIONS mm WxDxH	TEMP RANGE	SHELVES	CONTAINER 40FT	WEIGHT KG
GN1400	R404a	1400x830x2000 (1250x685x1383)	-3 / +7°C	4	22	195kg
GN1400F	R404a	1400x830x2000 (1250x685x1383)	-18 / -24°C	4	22	195kg

13A plugs which must be inserted into separate 13A sockets connected to a minimum 32A mains supply. The socket employed must be properly earthed, firmly installed and protected by 32-amp circuit breaker type C.

Frost Tech Stainless Steel Counters Chiller / Freezer

This range is ideal for for any busy kitchen where quality remains a consideration.
(Maximum operating temperature upto 43°C/60%R/H)



TG19 Chiller Stainless Steel

Features

- 304 grade Stainless Steel interior/exterior
- Digital temperature controller
- Easy gasket removal for cleaning
- LED temperature display
- Mounted on castors
- Gastronorm compatible
- Insulation 75mm thick in water based polyurethan foam with density approx. 42 kg/m3
- Magnetic door gasket on sides with counter magnet on gasket ledges
- Door in AISI 304 18/10 stainless steel (Satin Finish)
- Ergonomic full height door handle
- Lader rack in AISI 304 18/10 stainless steel, removable without use of tools for easy cleaning
- Pull out condensing system for simple and easy servicing and repair
- Refrigerant R404a chiller and freezer
- Controlled forced air cooling system to guarantee the maximum efficiency and uniformity throughout the cabinet
- Automatic defrost cycles for energy savings
- Defrost water evaporation system with superheated gas for appliances with remote cooling unit, defrost water evaporation by means of thermostatic resistor
- Control for adjusting the relative humidity inside the cabinet from a minimum to a maximum
- Control equipped with cabinet probe, evaporator probe and condenser probe
- Compressor protected by overheat cut out with automatic reset
- Evaporator fan stops automatically when door is opened
- Alarm signalling tempature controler

Technical Specifications

CODE	REFRIGERANT	DIMENSIONS mm WxDxH	TEMP RANGE	SHELVES	CONTAINER 40FT	WEIGHT KG	DOORS
TG15	R404a	1480x700x850 (990x580x643)	-3 / +7°C	4	48	110kg	2
TG19	R404a	1955x700x850 (1465x580x643)	-3 / +7°C	6	36	130kg	3
TG24	R404a	2430x700x850 (1940x580x643)	-3 / +7°C	8	24	150kg	4
TD15F	R404a	1480x700x850 (990x580x643)	-18 / -24°C	4	48	115kg	2
TD19F	R404a	1955x700x850 (1465x580x643)	-18 / -24°C	6	36	135kg	3

13A plugs which must be inserted into sepearte 13A sockets connected to a minimum 32A mains supply. The socket employed must be properly earthed, firmly installed and protected by 32-amp circuit breaker type C.

Frost-Tech Terms & Conditions

1. **ORDERS:** Buyer and Supplier, no orders submitted by the Buyer shall be deemed to be accepted by the Seller unless and until payment is received in full. The Buyer responsibility to ensure that the equipment will be fit for the purpose for which the Buyer intend to use the equipment.
2. **PRICE:** The Company reserves the right to amend prices at any time consequent upon increased costs of raw materials, labour, transport, market conditions or for any other reason whatsoever.
3. **WEEE Directive.** The Buyer will take responsibility for the finance of future collection and disposal of the cabinet, in accordance with the regulations. If the producer retains that responsibility then an extra charge will be incurred. The cost will be negotiated and invoiced separately.
4. **DELIVERY/COLLECTION:** Dates are given as estimates only and the Company cannot accept liability for any delays howsoever caused.
5. **INSTALLATION:** It is the Buyer's responsibility to ensure that the equipment is installed and commissioned by a qualified refrigeration engineer and all costs will be borne by the Buyer. Do not install where maximum room temperature is more than 25°C. Install as described in here and the manufacturer manual. The refrigerated cabinet air temperature -1 / +7°C. Freezer -18 / -22°C.
6. **TERMS OF PAYMENT:** Unless otherwise agreed by the Company in writing, payment for goods is strictly on a pro forma basis and the goods will not be reserved until payment is received.
7. **TITLE TO GOODS:** The title to the goods shall remain with the Company until full payment is received from the Buyer. In the case of non-payment we shall be entitled to repossess the goods, or the proceeds of the sale held by you or held by any liquidator or receiver. The risk in the goods shall however pass to the Buyer at the time of delivery / collection.
8. **CHECKING GOODS/CLAIMS FOR DAMAGE IN TRANSIT:** It is the Buyer's responsibility to inspect the goods at the time of taking delivery/collection. Should equipment arrive damaged, the Delivery Note must be endorsed accordingly and the delivery/part delivery refused. If signed for "unexamined" the Buyer shall be deemed to have accepted the goods and no claim for damage will be entertained by the Seller.
9. **CANCELLATION/RETURN OF GOODS:** Requests for return of goods for whatever reason must be made in writing on the day of delivery and will be entirely at the discretion of the Company. Such requests will only be considered where the equipment has not been in use at any time. Defects in quality or dimension of any delivery shall not be grounds for cancellation of the remainder of the contract.
10. **WARRANTY:** All goods are sold without Warranty. Different warranty requirements may be negotiated on a market and country basis. It is the Buyer's legal responsibility to ensure that preventative maintenance is carried out and all electrical and mechanical parts tested every three months by a qualified refrigeration engineer as described in here and the manufacturer manual. Failure to provide satisfactory maintenance will invalidate any Warranty. All goods are sold with NO Warranty. Any Warranty will exclude any glass, light fittings, cosmetic damage or customer mis-use. The Seller shall be under no liability in respect of any defect arising from fair wear and tear: abnormal site conditions or failure to have the equipment serviced as described in here and the manufacturer manual. The Company shall not accept any claim for any loss of profit or economic loss resulting from defective parts. All parts must be paid for in full prior to despatch. Labour and transport costs for replacing faulty parts will be charged at the current rate. Following replacement of a part, the Company cannot guarantee that other parts will not fail in the future. The refrigerated cabinets must be maintained by a qualified refrigeration engineer every three months as described above and the manufacturer manual. Install where maximum room temperature is not over 25°C.
11. **VARIANCE:** All dimensions given are to be regarded as being for guidance only and are not binding on the Company. It is the responsibility of the Buyer to allow sufficient clearance for installation: and to ensure that the ventilation grill panels are kept free for adequate air circulation also to ensure that cabinets are positioned away from direct sunlight or source of hot or cold air.
12. **MODIFICATIONS:** If any alterations have been undertaken by the buyer or a contractor the Company shall not be held responsible for any defects or problems which may occur: any such alterations will invalidate the warranty on the equipment. All costs incurred by the Buyer to diagnose problems arising from such modifications will be borne by the Buyer.

Notes Page

65

Notes Page

Notes

Notes Page



ECO-FRIDGE CUSTOMER CARE

ECO-Fridge UK Ltd
2 Wedgwood Road,
Bicester, Oxfordshire,
OX26 4UL
United Kingdom

Tel: 01869 249965
Fax: 01869 322477
E-mail: sales@eco-fridge.co.uk